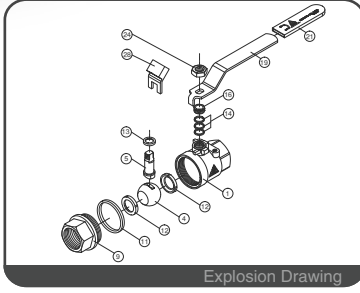
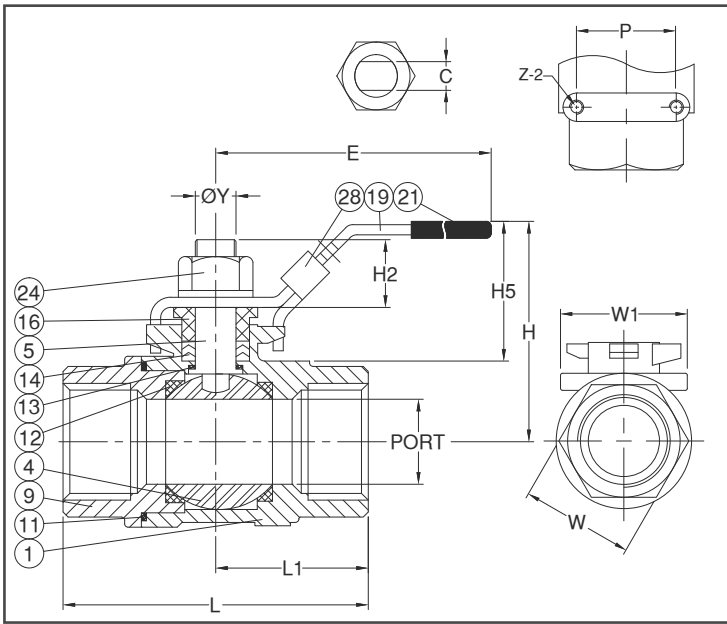


PN63/40 P-T Chart



Explosion Drawing



### FEATURES

- Investment Cast Body Construction
- 2 Pieces Body Design
- Mounting Pad Design
- Blow-Out-Proof Stem Design
- Locking Device **OPTION**
- Super Alloy materials for highly corrosive medium are available upon request

### SPECIFICATIONS

- Size Range DN8 ~ DN80 ( 1/4" ~ 3" )
- End Connection Threaded Ends
- Working Pressure
  - PN63 for DN8 ~ DN50 / 1000PSI ( CWP ) for 1/4" ~ 2"
  - PN40 for DN65 ~ DN80 / 800PSI ( CWP ) for 2-1/2" ~ 3"
- Steam Pressure 150 PSIG. Saturated Steam for PTFE.
- Temperature Range -4 to 356 °F ( -20 to 180 °C ) for PTFE.

### STANDARDS

- Design EN-12516-1/3
- Threaded End NPT/ BS 21 ( BSP ) / BSPT / ISO 228-1 / DIN 2999 / ISO 7-1Rp
- Face to Face MFG Standard
- Material EN1503-1
- Pressure Testing EN 12266

### CERTIFICATE

- Quality Assurance ISO 9001
- Material Certificate EN 10204-3.1 MTR
- CE Approval PED 2014/68/EU Module H

### MATERIAL LIST

NO.	PART NAME	MATERIAL ( more options available )
1	BODY	EN1503-1 1.4408
		EN1503-1 1.0619
4	BALL	ASTM A351 Gr.CF8M
5	STEM	ASTM A276 Gr.316
9	END CAP	EN1503-1 1.4408
		EN1503-1 1.0619
11	BODY SEAL	PTFE.
12	SEAT	PTFE.
13	THRUST WASHER	PTFE.
14	STEM PACKING	PTFE.
16	GLAND NUT	SS304
19	HANDLE	SS304
21	HANDLE COVER	PLASTIC
24	HANDLE NUT	SS304
28	LOCKING DEVICE	SS304 (OPTION )

### DIMENSION

													unit : mm			
SIZE	PORT	L	L1	E	H	H2	H5	C	ØY	W	W1	P	Z			
DN8	1/4"	11.5	54.4	25.4	103.9	50.0	9.5	35.5	4	5/16-24P	22	38.5	28	3/16"-24		
DN10	3/8"	12.5	54.4	25.4	103.9	50.0	9.5	35.5	4	5/16-24P	22	38.5	28	3/16"-24		
DN15	1/2"	15.0	65.3	30.9	123.0	56.5	12.4	42.3	5	3/8-16P	25	38.6	28	3/16"-24		
DN20	3/4"	20.0	77.3	39.9	123.0	60.5	12.2	42.5	5	3/8-16P	32	45.8	35	3/16"-24		
DN25	1"	25.0	88.7	44.3	145.0	69.3	17.7	45.8	8	M12-1.75P	40	45.8	35	3/16"-24		
DN32	1-1/4"	32.0	102.4	54.5	145.0	76.0	17.3	46.2	8	M12-1.75P	49	47.2	38	1/4"-20		
DN40	1-1/2"	38.1	109.0	54.5	189.0	84.5	20.1	51.7	10	M16-2.0P	55	47.0	38	1/4"-20		
DN50	2"	50.0	125.3	62.2	189.0	95.0	20.0	52.7	10	M16-2.0P	69	49.2	38	1/4"-20		
DN65	2-1/2"	65.0	165.0	81.4	255.0	131.3	21.5	76.3	10	M16-2.0P	85	68.5	55	1/4"-20		
DN80	3"	80.0	189.5	94.9	261.0	140.6	27.5	74.9	12	3/4-10P	102	69.5	55	1/4"-20		

### DIMENSION

													unit : inch			
SIZE	PORT	L	L1	E	H	H2	H5	C	ØY	W	W1	P	Z			
DN8	1/4"	0.45	2.14	1.00	4.09	1.96	0.37	1.39	0.15	5/16-24P	0.86	1.51	1.10	3/16"-24		
DN10	3/8"	0.49	2.14	1.00	4.09	1.96	0.37	1.39	0.15	5/16-24P	0.86	1.51	1.10	3/16"-24		
DN15	1/2"	0.59	2.57	1.21	4.84	2.22	0.48	1.66	0.19	3/8-16P	0.98	1.51	1.10	3/16"-24		
DN20	3/4"	0.78	3.04	1.57	4.84	2.38	0.48	1.67	0.19	3/8-16P	1.25	1.80	1.37	3/16"-24		
DN25	1"	0.98	3.49	1.74	5.70	2.72	0.69	1.80	0.31	M12-1.75P	1.57	1.80	1.37	3/16"-24		
DN32	1-1/4"	1.25	4.03	2.14	5.70	2.99	0.68	1.81	0.31	M12-1.75P	1.92	1.85	1.49	1/4"-20		
DN40	1-1/2"	1.50	4.29	2.14	7.44	3.32	0.79	2.03	0.39	M16-2.0P	2.16	1.85	1.49	1/4"-20		
DN50	2"	1.96	4.93	2.44	7.44	3.74	0.78	2.07	0.39	M16-2.0P	2.71	1.93	1.49	1/4"-20		
DN65	2-1/2"	2.55	6.49	3.20	10.03	5.16	0.84	3.00	0.39	M16-2.0P	3.34	2.69	2.16	1/4"-20		
DN80	3"	3.14	7.46	3.73	10.27	5.53	1.08	2.94	0.47	3/4-10P	4.01	2.73	2.16	1/4"-20		