



# Three Piece Fire Safe Approved High Pressure Ball Valve, Reduced Bore, 3000 PSI, Threaded end

**Fig no. HPV-40FSA Reduced Bore**  
1/4" ~ 2" DN 8- DN 50



### Features :

- BS 6755 PART2 API 607 5th Fire safe approved
- Bar material valve body, ISO 5211 Mounting flange
- Blow out proof stem, Anti-static design
- 360 degree rotation design, in-line maintenance
- For Chemical, Industrial application
- Carbon Steel, Super Alloy available upon request

### Standard Compliance

- Body wall thickness : ASME B16.34
- Thread end : BS 21 ( BSP )
- BSPT
- ISO 228-1G
- DIN 2999
- ISO 7-1Rp
- Face to face : MD's standard
- Body material : ASME / ANSI
- Pressure testing : API 598

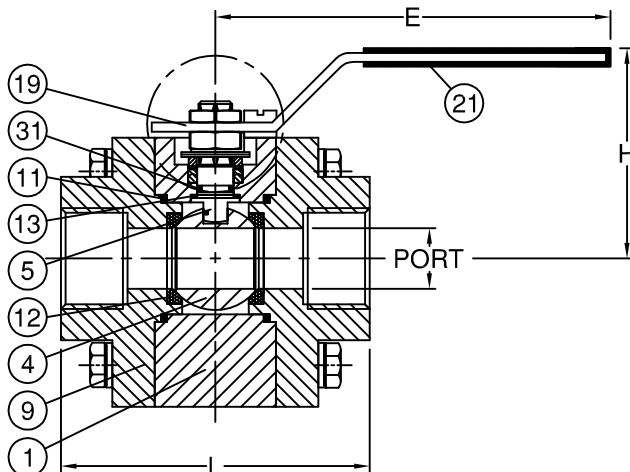
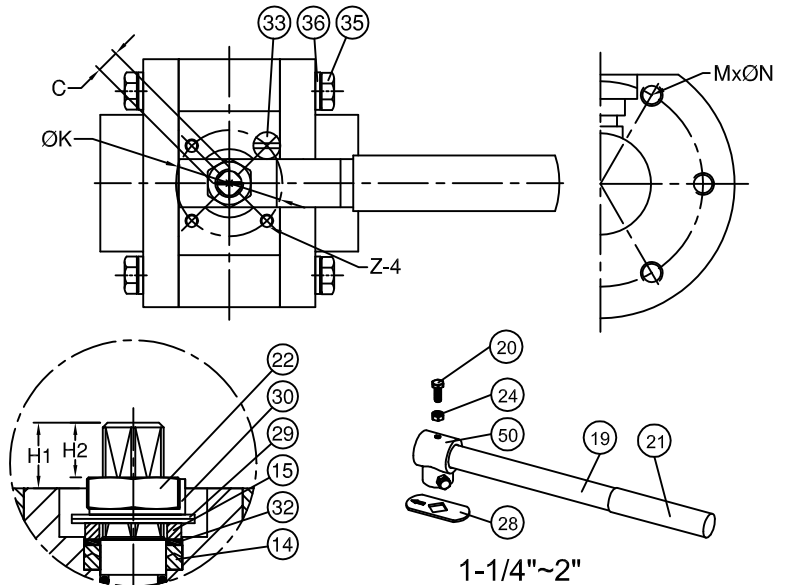
Fire safe testing : API 607 5th, BS6755 PART 2  
ISO 10497

### MATERIALS LIST

NO.	PART NAME	MATERIAL
1	BODY	SS316/SS1015
4	BALL	ASTM A351 Gr.CF8M
5	STEM	17-4PH
9	END CAP	SS316/SS1015
11	BODY SEAL	PTFE.
12	SEAT	DELTRIN
13	THRUST WASHER	TFM1600
14	STEM PACKING	GRAPHITE
15	GLAND BUSH	SS304
19	HANDLE	SS304
20	SET SCREW	SS304
21	HANDLE COVER	PLASTIC
22	STEM NUT	SS304
24	HANDLE NUT	ASTM A2 70
28	STOP PLATE	SS304
29	BELLEVILLE WASHER	SS304-CSP
30	TAB WASHER	SS304
31	O-RING	VITON
32	PACKING FOLLOWER	TFM1600
33	STOP PIN	SS304
35	BODY BOLT	ASTM A2 70
36	BOLT WASHER	SS304
50	STEM ADAPTER	SS304

### Specification :

- End Connection : Thread end
- Working pressure : 246 bar ( CWP)
- Temperature : -20°C to 80°C for Delrin seat  
-20°C to 250°C for Peek seat



### DIMENSIONS

unit:mm

SIZE	PORT	L	E	H	H1	H2	C	M	ØN	ØK	Z	
DN8	1/4"	9.5	85.0	151.0	61.0	12.6	7.0	9.0	4	M8	36.0	M5
DN10	3/8"	11.6	85.0	151.0	61.0	12.6	7.0	9.0	4	M8	36.0	M5
DN15	1/2"	12.5	85.0	151.0	61.0	12.6	7.0	9.0	4	M8	36.0	M5
DN20	3/4"	15.0	89.0	151.0	67.0	19.55	10.3	9.0	4	M8	42.0	M5
DN25	1"	20.0	102.0	183.0	81.0	16.4	10.0	9.0	6	M8	42.0	M5
DN32	1-1/4"	25.0	111.0	183.0	97.0	24.05	11.5	11.0	6	M8	42.0	M5
DN40	1-1/2"	32.0	119.0	285.0	113.0	34.5	17.5	14.0	6	M10	50.0	M6
DN50	2"	38.0	126.0	285.0	117.0	32.1	17.5	14.0	6	M12	50.0	M6

### DIMENSIONS

unit:inch

SIZE	PORT	L	E	H	H1	H2	C	M	ØN	ØK	Z	
DN8	1/4"	0.37	3.35	5.94	2.40	0.50	0.28	0.35	4	M8	1.42	M5
DN10	3/8"	0.46	3.35	5.94	2.40	0.50	0.28	0.35	4	M8	1.42	M5
DN15	1/2"	0.49	3.35	5.94	2.40	0.50	0.28	0.35	4	M8	1.42	M5
DN20	3/4"	0.59	3.50	5.94	2.64	0.77	0.41	0.35	4	M8	1.65	M5
DN25	1"	0.79	4.02	7.20	3.19	0.65	0.39	0.35	6	M8	1.65	M5
DN32	1-1/4"	0.98	4.37	7.20	3.82	0.95	0.45	0.43	6	M8	1.65	M5
DN40	1-1/2"	1.26	4.69	11.22	4.45	1.36	0.69	0.55	6	M10	1.97	M6
DN50	2"	1.50	4.96	11.22	4.61	1.26	0.69	0.55	6	M12	1.97	M6