



Three Piece Fire Safe Approved High Pressure Ball Valve, Full Bore, 6000 PSI, Threaded end

Fig no. HPV-41FS Full Bore
1/4" ~ 2" DN 8- DN 50



Features :

- BS 6755 PART2 API 607 5th Fire safe approved**
- Bar material valve body, ISO 5211 Mounting flange
- Blow out proof stem, Anti-static design
- 360 degree rotation design, in-line maintenance
- For Chemical, Industrial application
- Carbon Steel, Super Alloy available upon request

Standard Compliance

- Body wall thickness : ASME B16.34
- Thread end : BS 21 (BSP)
- BSPT
- ISO 228-1G
- DIN 2999
- ISO 7-1Rp
- Face to face : MD's standard
- Body material : ANSI /ASME
- Pressure testing : API 598

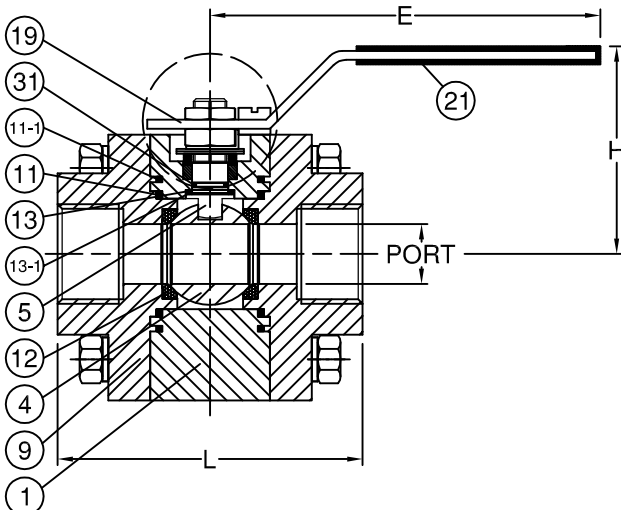
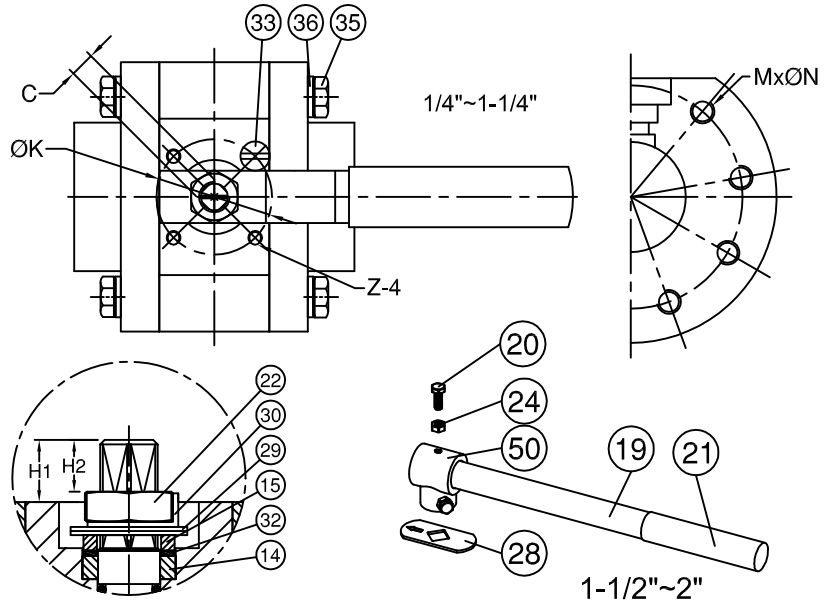
**Fire safe testing : API 607 5th, BS6755 PART 2
ISO 10497**

MATERIALS LIST

NO.	PART NAME	MATERIAL
1	BODY	SS316/SS1015
4	BALL	ASTM A351 Gr.CF8M
5	STEM	17-4PH
9	END CAP	SS316/SS1015
11	BODY SEAL	GRAPHITE
11-1	BODY SEAL	PTFE.
12	SEAT	PEEK
13	THRUST WASHER	GRAPHITE
13-1	THRUST WASHER	PTFE.
14	STEM PACKING	GRAPHITE
15	GLAND BUSH	SS304
19	HANDLE	SS304
20	SET SCREW	SS304
21	HANDLE COVER	VINYL GRIP
22	STEM NUT	SS304
24	HANDLE NUT	ASTM A2 70
28	STOP PLATE	SS304
29	BELLEVILLE WASHER	SS304-CSP
30	TAB WASHER	SS304
31	O-RING	VITON
32	PACKING FOLLOWER	TFM1600
33	STOP PIN	SS304
35	BODY BOLT	ASTM A2 70
36	BOLT WASHER	SS304
50	STEM ADAPTER	SS304

Specification :

- End Connection : Thread end
- Working pressure : 410 bar (CWP) / 6000 PSI
- Temperature : -20°C to 80°C for Delrin seat
-20°C to 250°C for Peek seat



DIMENSIONS

unit:mm

SIZE	PORT	L	E	H	H1	H2	C	M	ØN	ØK	Z	
DN8	1/4"	0.37	3.35	5.94	2.4	0.40	0.28	0.35	6	5/16"-18UNC	1.42	M5
DN10	3/8"	0.46	3.35	5.94	2.4	0.40	0.28	0.35	6	5/16"-18UNC	1.42	M5
DN15	1/2"	0.63	3.50	5.94	2.64	0.58	0.41	0.35	8	5/16"-18UNC	1.65	M5
DN20	3/4"	0.79	4.02	7.17	3.19	0.47	0.39	0.35	8	5/16"-18UNC	1.65	M5
DN25	1"	0.98	4.37	7.17	3.82	0.88	0.45	0.43	8	5/16"-18UNC	1.65	M5
DN32	1-1/4"	1.26	4.69	11.22	4.45	1.31	0.69	0.55	8	3/8"-16UNC	1.97	M6
DN40	1-1/2"	1.50	4.96	11.22	4.61	1.10	0.69	0.55	8	1/2"-13UNC	1.97	M6
DN50	2"	1.97	5.83	11.22	4.92	1.10	0.69	0.55	8	9/16"-12UNC	1.97	M6

DIMENSIONS

unit:inch

SIZE	PORT	L	E	H	H1	H2	C	M	ØN	ØK	Z	
DN8	1/4"	9.5	85.0	151.0	61.0	10.1	7.0	9.0	6	5/16"-18UNC	36.0	M5
DN10	3/8"	11.6	85.0	151.0	61.0	10.1	7.0	9.0	6	5/16"-18UNC	36.0	M5
DN15	1/2"	16.0	89.0	151.0	67.0	14.85	10.3	9.0	8	5/16"-18UNC	42.0	M5
DN20	3/4"	20.0	102.0	183.0	81.0	12.0	10.0	9.0	8	5/16"-18UNC	42.0	M5
DN25	1"	25.0	111.0	183.0	97.0	22.3	11.5	11.0	8	5/16"-18UNC	42.0	M5
DN32	1-1/4"	32.0	119.0	285.0	113.0	33.2	17.5	14.0	8	3/8"-16UNC	50.0	M6
DN40	1-1/2"	38.0	126.0	285.0	117.0	28.0	17.5	14.0	8	1/2"-13UNC	50.0	M6
DN50	2"	50.0	148.0	285.0	125.0	28.0	17.5	14.0	8	9/16"-12UNC	50.0	M6