

**Fig no. K-365L/T Standard Bore**  
**1/4" ~ 2" DN 8- DN 50**



**Features :**

Investment Casting, ISO 5211 Mounting Pad  
 Blow out proof stem 360 degree rotation design  
 For Chemical, Industrial Application  
 Clamp end also available for Sanitary application  
 Carbon Steel or Super Alloy upon request

**Standard Compliance :**

Body wall thickness : EN 12516-1/3  
 Threaded end : BS 21 (BSP)  
 BSPT  
 ISO 228-1G  
 DIN 2999  
 ISO 7-1Rp

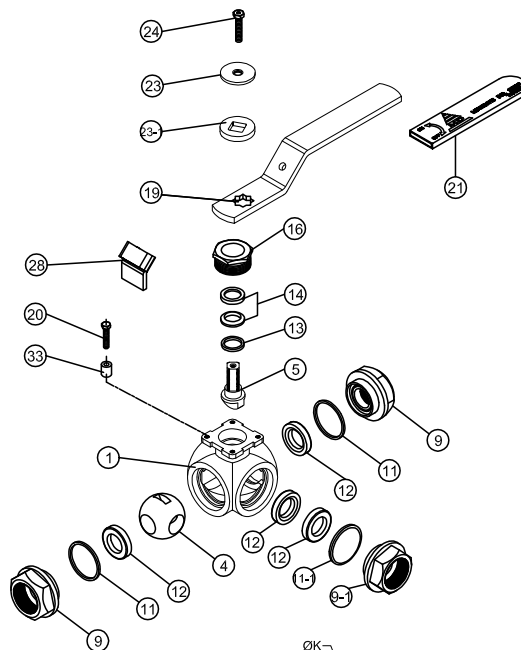
Face to Face : MD's standard  
 Body material : EN1503-1  
 Pressure testing : EN 12266

**Specification :**

End connection : Threaded end  
 Working Pressure : 1000 Psi / 63 Bar ( CWP )  
 Temperature : -20 to 180°C

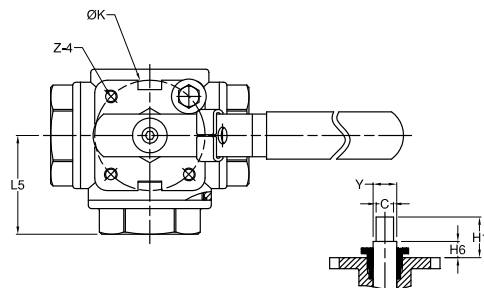
**MATERIALS LIST**

NO.	PART NAME	MATERIAL
1	BODY	ASTM A351 Gr.CF8M
4	BALL	ASTM A351 Gr.CF8M
5	STEM	SS316
9	END CAP	ASTM A351 Gr.CF8M
9-1	END CAP	ASTM A351 Gr.CF8M
11	BODY SEAL	PTFE.
11-1	BODY SEAL	PTFE.
12	SEAT	PTFE.
13	THRUST WASHER	PTFE.
14	STEM PACKING	PTFE.
16	GLAND NUT	SS304
19	HANDLE	SS304
20	SCREW	SS304
21	HANDLE COVER	PLASTIC
23	WASHER	SS304
23-1	WASHER	SS304
24	HANDLE NUT	SS304
28	LOCKING DEVICE	SS304
33	STOP PIN	SS304



**DIMENSIONS**

SIZE	PORT	L	L5	E	H	H1	H6	C	Y	ØK	Z-4	
DN8	1/4"	11.0	69.3	34.7	132.0	58.0	10.35	5.35	9.0	12.0	42.0	M5*0.8
DN10	3/8"	11.0	69.3	34.7	132.0	58.0	10.35	5.35	9.0	12.0	42.0	M5*0.8
DN15	1/2"	12.5	75.7	38.3	132.0	61.0	10.35	5.35	9.0	12.0	42.0	M5*0.8
DN20	3/4"	16.0	86.6	44.7	180.0	82.0	13.85	6.85	11.0	15.0	50.0	M6*1.0
DN25	1"	20.0	103.0	50.8	180.0	87.5	20.0	8.5	11.0	15.0	50.0	M6*1.0
DN32	1-1/4"	25.0	118.2	57.7	180.0	93.0	19.35	7.85	11.0	15.0	50.0	M6*1.0
DN40	1-1/2"	32.0	125.8	62.6	210.0	104.0	25.75	10.25	11.0	15.0	70.0	M8*1.25
DN50	2"	38.0	149.0	74.3	225.0	112.0	25.25	9.75	14.0	18.5	70.0	M8*1.25



SIZE	PORT	L	L5	E	H	H1	H6	C	Y	ØK1	Z-4	Tor(kgf.cm)	
DN8	1/4"	0.43	2.73	1.37	5.2	2.28	0.41	0.21	0.35	0.47	1.65	M5*0.8	33.0
DN10	3/8"	0.43	2.73	1.37	5.2	2.28	0.41	0.21	0.35	0.47	1.65	M5*0.8	33.0
DN15	1/2"	0.49	2.98	1.51	5.2	2.4	0.41	0.21	0.35	0.47	1.65	M5*0.8	33.0
DN20	3/4"	0.63	3.41	1.76	7.09	3.23	0.55	0.27	0.43	0.59	1.97	M6*1.0	50.0
DN25	1"	0.79	4.06	2.0	7.09	3.44	0.79	0.33	0.43	0.59	1.97	M6*1.0	90.0
DN32	1-1/4"	0.98	4.65	2.27	7.09	3.66	0.76	0.31	0.43	0.59	1.97	M6*1.0	170.0
DN40	1-1/2"	1.26	4.95	2.46	8.27	4.09	1.01	0.4	0.43	0.59	2.76	M8*1.25	220.0
DN50	2"	1.5	5.75	2.93	8.86	4.41	0.99	0.38	0.55	0.73	2.76	M8*1.25	380.0

