



Two Piece Screwed Ball Valves, Male x Male, Reduced Bore, 800 Psi

Fig No: V-111 Reduced Bore
1/4" ~ 1" DN8 ~ DN25



Features :

- Screwed Body Design
- Investment Cast Components
- Blow-Out-Proof Stem Design
- For General Chemical and Industrial Application.
- Carbon Steel or Special Alloy Upon Request

Standard Compliance :

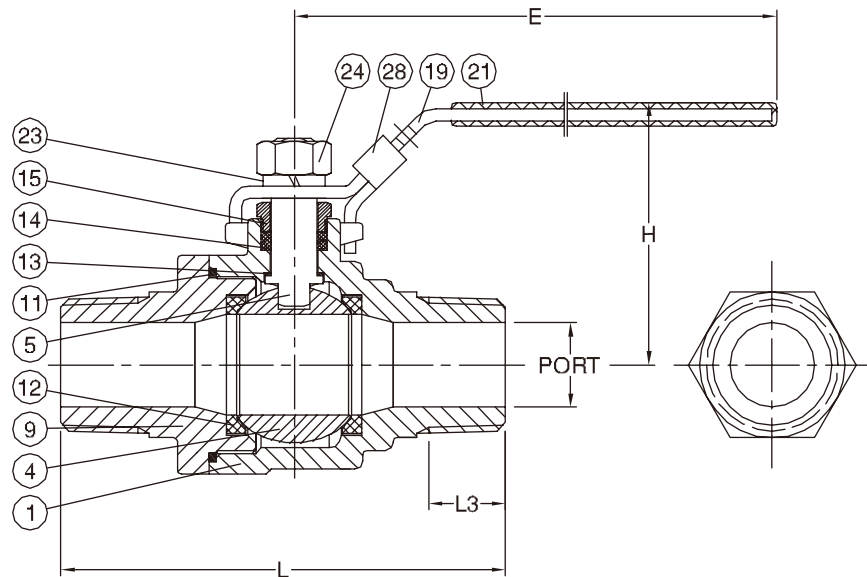
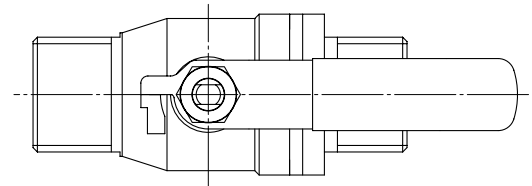
ASTM ASME B16.34 API 598 EN 10213 EN 12516 EN 12266

Specifications:

- End Connection : Threaded End
- Working Pressure : 1/4" ~ 1" 800 Psi / 40 Bar (CWP)
- Temperature Range : - 4 to 356 °F / - 20 to 180 °C
- Pressure Test According to API 598 or EN 12266

MATERIALS LIST

NO.	PART NAME	MATERIAL
1	BODY	ASTM A351 Gr.CF8M
4	BALL	ASTM A351 Gr.CF8M
5	STEM	SS316
9	END CAP	ASTM A351 Gr.CF8M
11	BODY SEAL	PTFE.
12	SEAT	PTFE.
13	THRUST WASHER	PTFE.
14	STEM PACKING	PTFE.
15	GLAND	SS304
19	HANDLE	SS304
21	HANDLE COVER	PLASTIC
23	HANDLE WASHER	SS304
24	HANDLE NUT	SS304
28	LOCKING DEVICE	SS304(OPTION)



DIMENSIONS

unit:mm

SIZE	PORT	L	L3	E	H	
DN8	1/4"	8.5	69	12	104	50.0
DN10	3/8"	9.0	71	12	104	50.0
DN15	1/2"	11.6	79	15	123	56.5
DN20	3/4"	14.5	94	18	123	60.5
DN25	1"	20.0	106	20	145	69.3
DN32	1-1/4"	25.0	122	22	145	76.0
DN40	1-1/2"	32.0	142	25	189	84.5
DN50	2"	38.0	168	28	189	95.0

DIMENSIONS

unit:inch

SIZE	PORT	L	L3	E	H	
DN8	1/4"	0.33	2.72	0.47	4.09	1.97
DN10	3/8"	0.35	2.8	0.47	4.09	1.97
DN15	1/2"	0.46	3.11	0.59	4.84	2.22
DN20	3/4"	0.57	3.7	0.71	4.84	2.38
DN25	1"	0.79	4.17	0.79	5.71	2.73
DN32	1-1/4"	0.98	4.8	0.87	5.71	2.99
DN40	1-1/2"	1.26	5.59	0.98	7.44	3.33
DN50	2"	1.5	6.61	1.10	7.44	3.74

