

FEATURES

- Investment Cast Body Construction
- 1 Piece Body Design
- ISO 5211 Mounting Flange
- Blow-Out-Proof Stem Design
- Anti-Static Device
- Available for Pneumatic or Electric Actuator
- Super Alloy materials for highly corrosive medium are available upon request

AUTOMATION AVAILABLE

SPECIFICATIONS

- Size Range: 3/4" ~ 6" (DN20 ~ DN150)
- End Connection: Flanged End, RF
- Working Pressure: CF8M - 720 PSI (CWP)
WCB - 740 PSI (CWP)
- Steam Pressure: 150 PSIG. Saturated Steam for RTFE.
- Temperature Range: -4 to 356 °F (-20 to 180 °C) for RTFE.

STANDARDS

- Design: ASME/ANSI B16.34
- Mounting Flange: ISO 5211
- Face to Face: ASME/ANSI B16.10 Class 300
- Flange Dimension: ASME/ANSI B16.5 Class 300 RF
- Material: ASTM
- Pressure Testing: API 598

CERTIFICATE

- Fire Safe **OPTION**: API 607 4th Edition
- Quality Assurance: ISO 9001
- Material Certificate: EN 10204-3.1 MTR
- CE Approval: PED 97/23/EC Module H
- Canadian Certificate: CRN

MATERIAL LIST

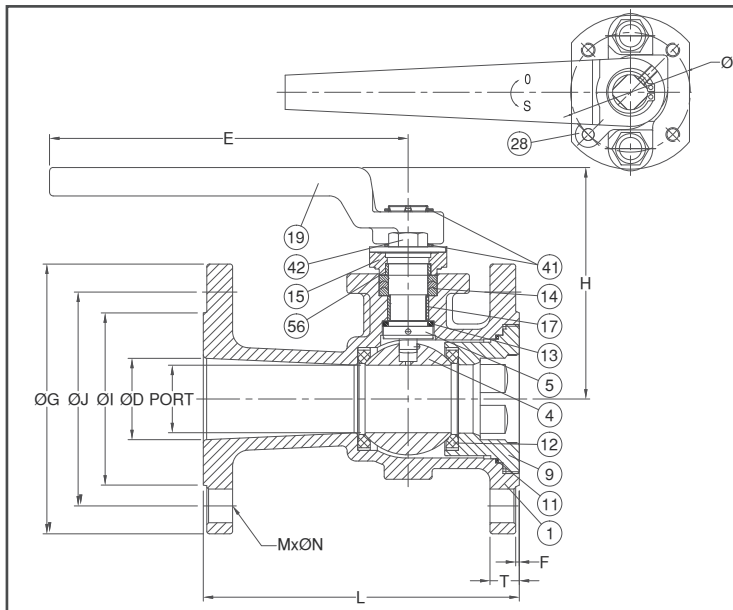
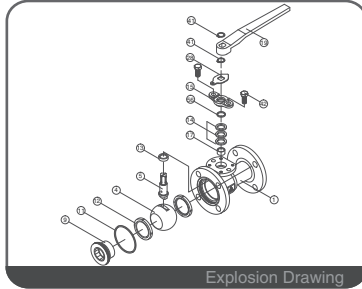
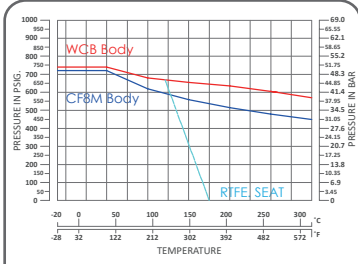
| NO. | PART NAME | MATERIAL (more options available) |
|-----|---------------|--|
| 1 | BODY | ASTM A351 Gr.CF8M ASTM A216 Gr.WCB |
| 4 | BALL | ASTM A351 Gr.CF8M |
| 5 | STEM | ASTM A276 Gr.SS316 |
| 9 | END CAP | ASTM A351 Gr.CF8M ASTM A216 Gr.WCB |
| 11 | BODY SEAL | PTFE. |
| 12 | SEAT | RTFE.(15%G.F.) |
| 13 | THRUST WASHER | PTFE. |
| 14 | STEM PACKING | PTFE. |
| 15 | GLAND FLANGE | ASTM A351 Gr.CF8 |
| 17 | STEM BUSH | PTFE. |
| 19 | HANDLE | FCD 45 |
| 28 | STOP PLATE | SS304 |
| 41 | SNAP RING | SS304 |
| 42 | GLAND BOLT | SS304 |
| 56 | GLAND BEARING | PTFE. |

DIMENSION

| | | unit : mm | | | | | | | | | | | | | |
|------|--------|-----------|-----|-------|-------|-----|-------|-------|------|-----|----|------|----|-----|------|
| SIZE | PORT | L | E | H | ØG | ØJ | ØI | T | F | M | ØN | ØK | ØD | | |
| DN20 | 3/4" | 16.0 | 152 | 129.5 | 70.5 | 117 | 82.5 | 43.0 | 15.9 | 2.0 | 4 | 19.0 | 36 | F03 | 20.0 |
| DN25 | 1" | 20.0 | 165 | 130.8 | 79.9 | 124 | 89.0 | 51.0 | 17.5 | 2.0 | 4 | 19.0 | 42 | F04 | 25.0 |
| DN40 | 1-1/2" | 32.0 | 190 | 163.0 | 96.0 | 156 | 114.5 | 73.0 | 20.7 | 2.0 | 4 | 22.0 | 50 | F05 | 38.0 |
| DN50 | 2" | 38.0 | 216 | 202.0 | 130.4 | 165 | 127.0 | 92.0 | 22.3 | 2.0 | 8 | 19.0 | 70 | F07 | 46.0 |
| DN65 | 2-1/2" | 50.8 | 241 | 202.0 | 137.9 | 190 | 149.0 | 105.0 | 25.4 | 2.0 | 8 | 22.0 | 70 | F07 | 65.0 |

DIMENSION

| | | unit : inch | | | | | | | | | | | | | |
|------|--------|-------------|------|------|------|------|------|------|------|------|----|------|------|-----|------|
| SIZE | PORT | L | E | H | ØG | ØJ | ØI | T | F | M | ØN | ØK | ØD | | |
| DN20 | 3/4" | 0.62 | 5.98 | 5.09 | 2.77 | 4.60 | 3.24 | 1.69 | 0.62 | 0.07 | 4 | 0.74 | 1.41 | F03 | 0.78 |
| DN25 | 1" | 0.78 | 6.49 | 5.14 | 3.14 | 4.88 | 3.50 | 2.00 | 0.68 | 0.07 | 4 | 0.74 | 1.65 | F04 | 0.98 |
| DN40 | 1-1/2" | 1.25 | 7.48 | 6.41 | 3.77 | 6.14 | 4.50 | 2.87 | 0.81 | 0.07 | 4 | 0.86 | 1.96 | F05 | 1.49 |
| DN50 | 2" | 1.49 | 8.50 | 7.95 | 5.13 | 6.49 | 5.00 | 3.62 | 0.87 | 0.07 | 8 | 0.74 | 2.75 | F07 | 1.81 |
| DN65 | 2-1/2" | 2.00 | 9.48 | 7.95 | 5.42 | 7.48 | 5.86 | 4.13 | 1.00 | 0.07 | 8 | 0.86 | 2.75 | F07 | 2.55 |



FEATURES

- Investment Cast Body Construction
- 1 Piece Body Design
- ISO 5211 Mounting Flange
- Blow-Out-Proof Stem Design
- Anti-Static Device
- Available for Pneumatic or Electric Actuator
- Super Alloy materials for highly corrosive medium are available upon request

AUTOMATION AVAILABLE

SPECIFICATIONS

- Size Range: 3/4" ~ 6" (DN20 ~ DN150)
- End Connection: Flanged End, RF
- Working Pressure: CF8M - 720 PSI (CWP)
WCB - 740 PSI (CWP)
- Steam Pressure: 150 PSIG. Saturated Steam for RTFE.
- Temperature Range: -4 to 356 °F (-20 to 180 °C) for RTFE.

STANDARDS

- Design: ASME/ANSI B16.34
- Mounting Flange: ISO 5211
- Face to Face: ASME/ANSI B16.10 Class 300
- Flange Dimension: ASME/ANSI B16.5 Class 300 RF
- Material: ASTM
- Pressure Testing: API 598

CERTIFICATE

- Fire Safe **OPTION**: API 607 4th Edition
- Quality Assurance: ISO 9001
- Material Certificate: EN 10204-3.1 MTR
- CE Approval: PED 97/23/EC Module H
- Canadian Certificate: CRN

MATERIAL LIST

| NO. | PART NAME | MATERIAL (more options available) |
|-----|---------------|--|
| 1 | BODY | ASTM A351 Gr.CF8M ASTM A216 Gr.WCB |
| 4 | BALL | ASTM A351 Gr.CF8M |
| 5 | STEM | ASTM A276 Gr.SS316 |
| 9 | END CAP | ASTM A351 Gr.CF8M ASTM A216 Gr.WCB |
| 11 | BODY SEAL | PTFE. |
| 12 | SEAT | RTFE.(15%G.F.) |
| 13 | THRUST WASHER | PTFE. |
| 14 | STEM PACKING | PTFE. |
| 15 | GLAND FLANGE | ASTM A351 Gr.CF8 |
| 17 | STEM BUSH | PTFE. |
| 19 | HANDLE | FCD 45 |
| 28 | STOP PLATE | SS304 |
| 41 | SNAP RING | SS304 |
| 42 | GLAND BOLT | SS304 |
| 56 | GLAND BEARING | PTFE. |

DIMENSION

| | | | | | | | | | | | | | | unit : mm | | |
|-------|------|-------|-----|-------|-------|-----|-----|-----|------|-----|----|----|-----|-----------|-----|--|
| SIZE | PORT | L | E | H | ØG | ØJ | ØI | T | F | M | ØN | ØK | ØD | | | |
| DN80 | 3" | 57.0 | 283 | 323.5 | 159.3 | 210 | 168 | 127 | 28.6 | 2.0 | 8 | 22 | 102 | F10 | 78 | |
| DN100 | 4" | 80.0 | 305 | 323.5 | 182.3 | 254 | 200 | 157 | 31.8 | 2.0 | 8 | 22 | 102 | F10 | 95 | |
| DN150 | 6" | 115.0 | 403 | 752.5 | 241.6 | 318 | 270 | 216 | 36.6 | 2.0 | 12 | 22 | 125 | F12 | 150 | |

DIMENSION

| | | | | | | | | | | | | | | unit : inch | | |
|-------|------|------|-------|-------|------|-------|-------|------|------|------|----|------|------|-------------|------|--|
| SIZE | PORT | L | E | H | ØG | ØJ | ØI | T | F | M | ØN | ØK | ØD | | | |
| DN80 | 3" | 2.24 | 11.14 | 12.73 | 6.27 | 8.26 | 6.61 | 5.00 | 1.12 | 0.07 | 8 | 0.86 | 4.01 | F10 | 3.07 | |
| DN100 | 4" | 3.14 | 12.00 | 12.73 | 7.17 | 10.00 | 7.87 | 6.18 | 1.25 | 0.07 | 8 | 0.86 | 4.01 | F10 | 3.74 | |
| DN150 | 6" | 4.52 | 15.86 | 29.62 | 9.51 | 12.51 | 10.62 | 8.50 | 1.44 | 0.07 | 12 | 0.86 | 4.92 | F12 | 5.90 | |