

Fig no. V-Z05MTC Tube Bore
1/2" - 4" DN15 ~ DN100



Features:

- Investment casting body
- Blow-out-proof stem
- In-line Maintenance, ISO 5211 Mounting Flange
- For Hygienic application

Standard Compliance :

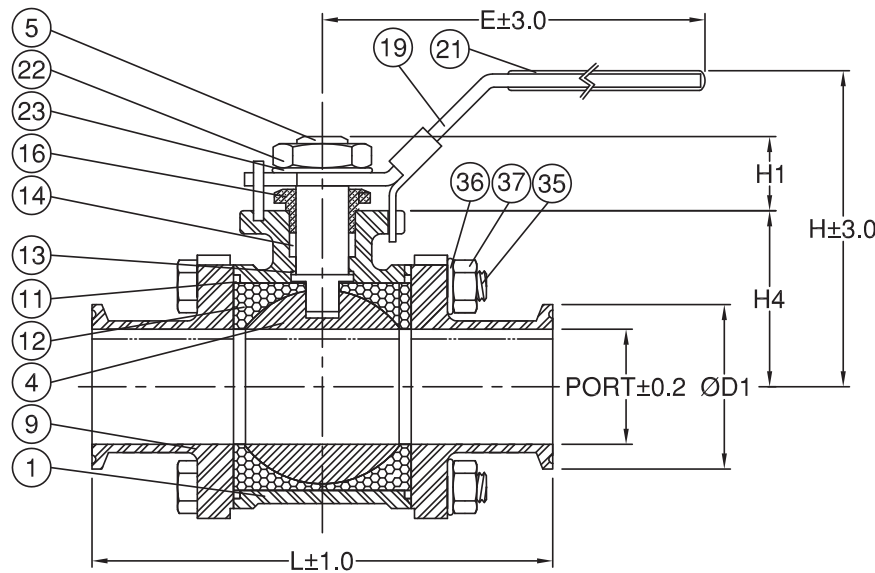
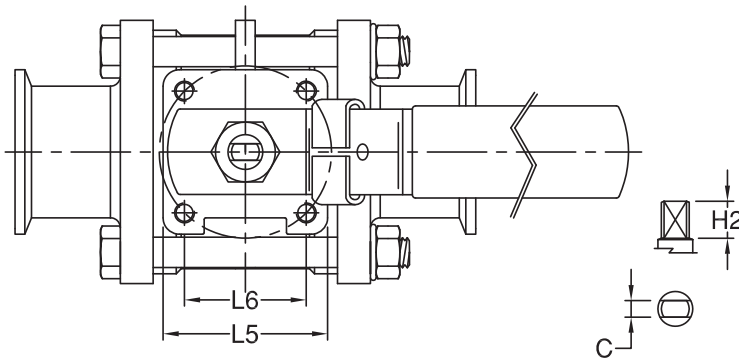
- Body wall thickness : ASTM B16.34
- Clamp end : 3A
- Face to face : MD's standard
- Body material : ASTM A351
- Pressure testing : EN 12266/ API 598

Specification :

- End Connection : Clamp end
- Working pressure : 1000 psi (PN 63) for DN8- DN 50
800 psi (PN40) for DN 65-DN100
- Temperature : -20 ~ 160°C
- Inter finish-polished to SV1

Options:

- 1. Non cavity filler seat



MATERIALS LIST

NO.	PART NAME	MATERIAL
1	BODY	ASTM A351 Gr.CF8M
4	BALL	ASTM A351 Gr.CF8M
5	STEM	SS316
9	END CAP	ASTM A351 Gr.CF8M
11	BODY SEAL	PTFE.
12	SEAT	PTFE.
13	THRUST WASHER	PTFE.
14	STEM PACKING	PTFE.
16	GLAND NUT	SS304
19	HANDLE	SS304
21	HANDLE COVER	PLASTIC
22	STEM NUT	SS304
23	STEM WASHER	SS304
35	BODY BOLT	SS304
36	BOLT WASHER	SS304
37	BOLT NUT	SS304

DIMENSIONS

unit:mm

SIZE	PORT	L	L5	L6	E	H	H1	H2	H4	C	ØD1	ISO-5211
DN15	1/2"	9.5	89.0	37.0	25.5	134.0	65.0	18.0	13.0	29.0	5.0	25.5 F03 36.0
DN20	3/4"	15.9	101.0	37.0	25.5	134.0	68.0	19.0	13.0	33.0	5.0	25.5 F03 36.0
DN25	1"	22.2	114.0	42.0	29.7	134.0	71.0	19.5	14.0	37.5	6.5	50.4 F04 42.0
DN40	1-1/2"	35.0	140.0	50.0	35.4	195.0	86.0	27.5	17.5	48.5	8.5	50.4 F05 50.0
DN50	2"	47.6	156.0	50.0	35.4	195.0	93.0	25.5	17.5	58.5	8.5	63.6 F05 50.0
DN65	2-1/2"	60.2	197.0	72.0	49.5	262.0	140.0	37.0	27.5	79.5	12.0	77.5 F07 70.0
DN80	3"	73.0	229.0	72.0	49.5	262.0	155.0	42.0	27.5	83.5	12.0	90.8 F07 70.0
DN100	4"	97.4	241.0	95.0	72.1	290.0	180.0	49.5	35.5	110.5	16.0	118.5 F10 102.0