

# API 607 Fire Safe Certified Ball Valve

## Typical Application :

Oil & Gas - Petrochemical – Chemical – Paraffin/Kerosene –  
Emergency Cut-Off - General Industrial



**Size : 1/4"~3"**  
**Full Bore**

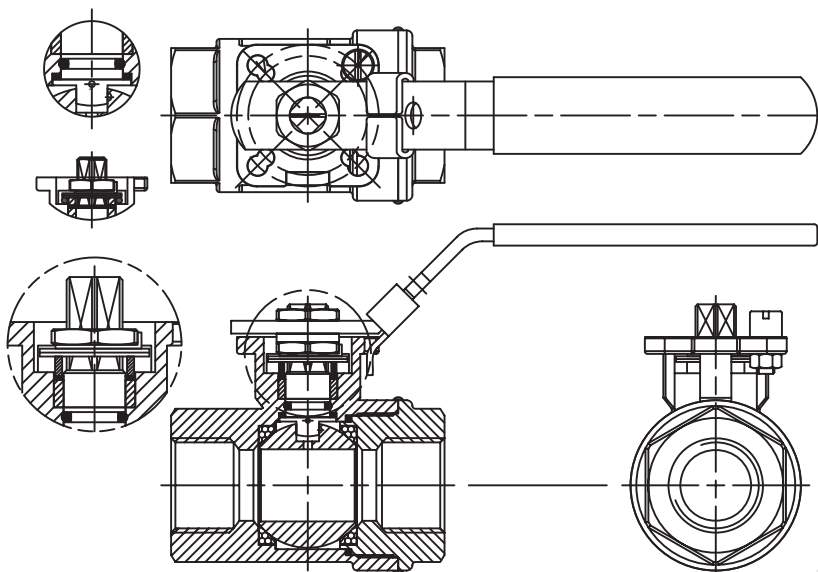
### • API 607 6<sup>th</sup> Edition Fire Test Approved

- Body material including Stainless Steel and Carbon Steel
- Body and Cap are welded together
- Blow out proof Stem & anti-static design
- ISO 5211 Direct Mounting pad simplify fit and alignment for actuator
- Floating Ball Design

## V-908

## 2-PIECE FIRE SAFE APPROVED DIRECT MOUNTING BALL VALVE

- A variety of seat materials are available for choice including PTFE, RTFE (PTFE with 15% G.F.), PTFE with 50% SS316, Carbon filled PTFE, and TFM. Stem packing and body seals are die formed flexible graphite.
- Lockable handle in open and close position to prevent inadvertent operation
- Design as per EN12516-1/3
- API 598 , EN12266-1 and MSS SP-55 testing and inspection
- End Connection : Threaded End
- Working pressure (CWP) : 2000 psi (PN140)



**MODENTIC VALVES**  
MODENTIC INDUSTRIAL CORPORATION



<http://www.ValveBus.com>



[www.valvebus.com](http://www.valvebus.com)