

# Fugitive Emission Test Certified Ball Valve

## Typical Application :

Oil & Gas - Petrochemical – Chemical – Paraffin/Kerosene –  
Emergency Cut-Off - General Industrial



## MD-28

## 2-PIECE DIRECT MOUNTING BALL VALVE

Size : 1/2"~6"

Size : 1/2"~4" API 607 6<sup>th</sup> Edition Fire Test Certified Available  
Full Bore

- Working pressure (CWP) : Class 150 / Class 300 / PN10 / PN16 / PN25 / PN40 / JIS10K / JIS20K

- End Connection : Flanged End

- ISO 15848-1 Fugitive Emission Test Certified

- Body material including Stainless Steel and Carbon Steel

- Blow out proof Stem & anti-static device

- ISO 5211 Direct Mounting Flange simplify fit and alignment for actuator

- Floating Ball Design

- A variety of seat materials are available including PTFE, RTFE (PTFE with 15% G.F.), PTFE with 50% SS316, Carbon filled PTFE, Peek, Delrin and TFM.

- Lockable handle in open and close position to prevent inadvertent operation

- Design as per ASME B16.34

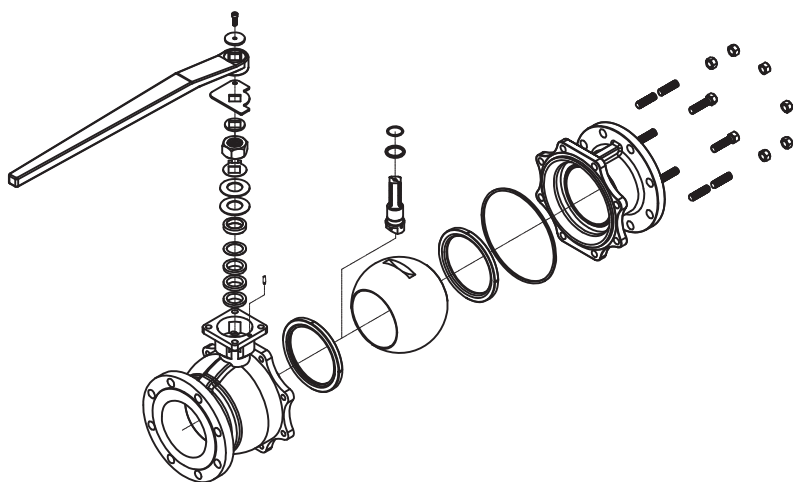
- Face to Face dimension: ANSI B16.10 / DIN3202 F4/F5/JIS B2002

- Flange dimension : ANSI B16.5 / DIN PN 10/16/25/40 / JIS B2003

- API 598 / EN12266-1 / JIS B2003 and MSS SP-55 testing and inspection

- NACE MR 01-75 upon request

- In compliance with ATEX 94/9/EC :  
ATEX II 2 GD (zones 1 & 21) and  
ATEX III 3 GD (zones 2 & 22)



**MODENTIC VALVES**  
MODENTIC INDUSTRIAL CORPORATION



<http://www.ValveBus.com>



[www.valvebus.com](http://www.valvebus.com)