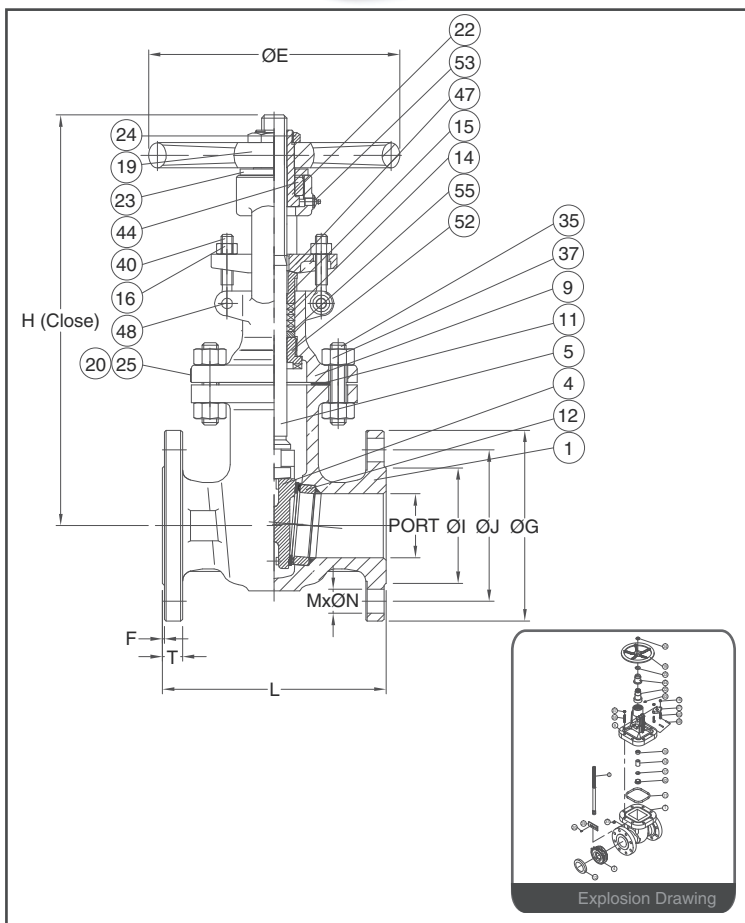




CRN
CERTIFICATED



FEATURES

- Investment Cast Body Construction
- Valve Design as per API 600
- Bolted Bonnet Design
- Rising Stem, Non Rising Handwheel
- Outside Screw & Yoke, Flexible Wedge
- Standard in Trim#8 ; Other Trim Materials are available upon request
- Available for Pneumatic or Electric Actuator
- NACE MR0175 is available upon request
- Super Alloy materials for highly corrosive medium are available upon request

AUTOMATION AVAILABLE

SPECIFICATIONS

- Size Range 2" ~ 36" (DN50 ~ DN900)
- End Connection Flanged End, RF
- Working Pressure CF8M - 275 PSI (CWP)
WCB - 285 PSI (CWP)

STANDARDS

- Design ASME/ANSI B16.34 / API 600
- Face to Face ASME/ANSI B16.10 Class 150
- Flange Dimension ASME/ANSI B16.5 Class 150 RF
- Material ASTM
- Pressure Testing API 598

CERTIFICATE

- Quality Assurance ISO 9001
- Material Certificate EN 10204-3.1 MTR
- CE Approval PED 97/23/EC Module H
- Canadian Certificate CRN

MATERIAL LIST

NO.	PART NAME	MATERIAL (more options available)	Trim#8
1	BODY	ASTM A216 Gr.WCB	
4	DISC	ASTM A216 Gr.WCB + 13Cr.	
5	STEM	ASTM A182 Gr.F6A	
9	BONNET	ASTM A216 Gr.WCB	
11	GASKET	SS304 + GRAPHITE (SPW)	
12	SEAT RING	ASTM A105 + STELLITE#6	
14	STEM PACKING	SS304 + GRAPHITE	
15	GLAND	ASTM A276 TYPE 410	
16	GLAND NUT	ASTM A194 Gr.2H	
17	PACKING	GRAPHITE	
19	HANDWHEEL	DUCTILE IRON	
20	RIVET	SS304	
22	STEM NUT	ASTM A439 Gr.D-2	
23	HANDWHEEL WASHER	SS304	
24	HANDWHEEL NUT	ASTM A29 TYPE 1025	
25	NAME PLATE	SS304	
35	BOLT	ASTM A193 Gr.B7	
37	STUD BOLT NUT	ASTM A194 Gr.2H	
40	EYE BOLT	ASTM A193 Gr.B7	
44	RETAINING NUT	ASTM A29 TYPE 1025	
47	GLAND FLANGE	ASTM A216 Gr.WCB	
48	PIN	ASTM A29 TYPE 1025	
52	BACK SEAT	ASTM A276 TYPE 410	
53	OIL FILLER	CARBON STEEL	

DIMENSION

SIZE		PORT	L	ØE	H(Close)	ØG	ØJ	ØI	T	F	M	ØN
DN50	2"	51	178	200	311	152	120.5	92	16	1.6	4	19
DN65	2-1/2"	64	190	200	354	178	139.5	105	18	1.6	4	19
DN80	3"	76	203	250	368	190	152.5	127	19	1.6	4	19
DN100	4"	102	229	250	434	229	190.5	157	24	1.6	8	19
DN125	5"	127	254	300	538	254	216.0	186	24	1.6	8	22
DN150	6"	152	267	300	581	279	241.5	216	26	1.6	8	22
DN200	8"	203	292	350	729	343	298.5	270	29	1.6	8	22
DN250	10"	254	330	400	864	406	362.0	324	31	1.6	12	26
DN300	12"	305	356	450	1013	483	432.0	381	32	1.6	12	26

DIMENSION

SIZE		PORT	L	ØE	H(Close)	ØG	ØJ	ØI	T	F	M	ØN
DN50	2"	2.01	7.01	7.87	12.24	5.98	4.74	3.62	0.63	0.06	4	0.75
DN65	2-1/2"	2.52	7.48	7.87	13.94	7.01	5.49	4.13	0.71	0.06	4	0.75
DN80	3"	2.99	7.99	9.84	14.49	7.48	6.00	5.00	0.75	0.06	4	0.75
DN100	4"	4.02	9.02	9.84	17.09	9.02	7.50	6.18	0.94	0.06	8	0.75
DN125	5"	5.00	10.00	11.81	21.18	10.00	8.50	7.32	0.94	0.06	8	0.87
DN150	6"	5.98	10.51	11.81	22.87	10.98	9.51	8.50	1.02	0.06	8	0.87
DN200	8"	7.99	11.50	13.78	28.70	13.50	11.75	10.63	1.14	0.06	8	0.87
DN250	10"	10.00	12.99	15.75	34.02	15.98	14.25	12.76	1.22	0.06	12	1.02
DN300	12"	12.01	14.02	17.72	39.88	19.02	17.01	15.00	1.26	0.06	12	1.02



FEATURES

- Investment Cast Body Construction
- Valve Design as per API 600
- Bolted Bonnet Design
- Rising Stem, Non Rising Handwheel
- Outside Screw & Yoke, Flexible Wedge
- Standard in Trim#8 ; Other Trim Materials are available upon request
- Available for Pneumatic or Electric Actuator
- NACE MR0175 is available upon request
- Super Alloy materials for highly corrosive medium are available upon request

AUTOMATION
AVAILABLE

SPECIFICATIONS

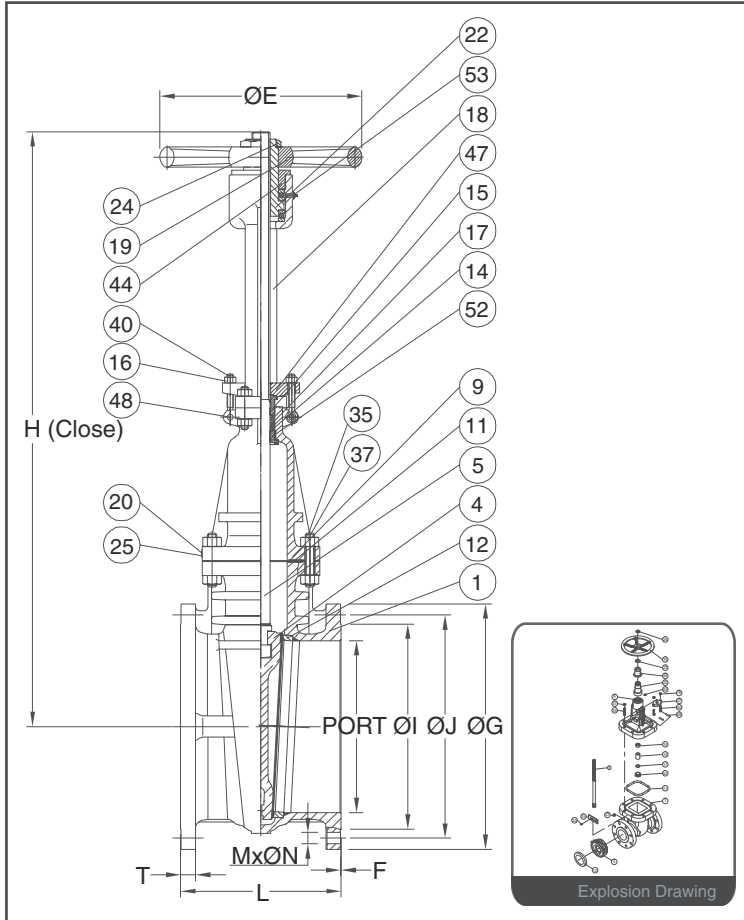
- Size Range 2" ~ 36" (DN50 ~ DN900)
- End Connection Flanged End, RF
- Working Pressure CF8M - 275 PSI (CWP)
WCB - 285 PSI (CWP)

STANDARDS

- Design ASME/ANSI B16.34 / API 600
- Face to Face ASME/ANSI B16.10 Class 150
- Flange Dimension ASME/ANSI B16.5 Class 150 RF
- Material ASTM
- Pressure Testing API 598

CERTIFICATE

- Quality Assurance ISO 9001
- Material Certificate EN 10204-3.1 MTR
- CE Approval PED 97/23/EC Module H
- Canadian Certificate CRN



MATERIAL LIST			Trim#8	DIMENSION										unit : mm	
NO.	PART NAME	MATERIAL (more options available)		SIZE	PORT	L	ØE	H(Close)	ØG	ØJ	ØI	T	F	M x ØN	
1	BODY	ASTM A216 Gr.WCB		DN350	14"	337	381	500	1107	533	476.0	413	35	1.6	12 x Ø29
4	DISC	ASTM A216 Gr.WCB + 13Cr.		DN400	16"	387	406	560	1259	597	540.0	470	37	1.6	16 x Ø29
5	STEM	ASTM A182 Gr.F6A		DN450	18"	438	432	640	1433	635	578.0	533	40	1.6	16 x Ø32
9	BONNET	ASTM A216 Gr.WCB		DN500	20"	489	457	640	1598	699	635.0	584	43	1.6	20 x Ø32
11	GASKET	SS304 + GRAPHITE (SPW)		DN600	24"	591	508	720	1858	813	749.5	692	48	1.6	20 x Ø35
12	SEAT RING	ASTM A105 + STELLITE#6													
14	STEM PACKING	SS304 + GRAPHITE													
15	GLAND	ASTM A276 TYPE 410													
16	GLAND NUT	ASTM A194 Gr.2H													
17	PACKING	GRAPHITE													
18	SLEEVE	ASTM A216 Gr.WCB													
19	HANDWHEEL	DUCTILE IRON													
20	RIVET	SS304													
22	STEM NUT	ASTM A439 Gr.D-2													
24	HANDWHEEL NUT	ASTM A29 TYPE 1025													
25	NAME PLATE	SS304													
35	BOLT	ASTM A193 Gr.B7													
37	STUD BOLT NUT	ASTM A194 Gr.2H													
40	EYE BOLT	ASTM A193 Gr.B7													
44	RETAINING NUT	ASTM A29 TYPE 1025													
47	GLAND FLANGE	ASTM A216 Gr.WCB													
48	PIN	ASTM A29 TYPE 1025													
52	BACK SEAT	ASTM A276 TYPE 410													
53	OIL FILLER	CARBON STEEL													

DIMENSION											unit : inch
SIZE	PORT	L	ØE	H(Close)	ØG	ØJ	ØI	T	F	M x ØN	
DN350	14"	13.27	15.00	19.69	43.58	20.98	18.74	16.26	1.38	0.06	12 x Ø1.14
DN400	16"	15.24	15.98	22.05	49.67	23.50	21.26	18.50	1.46	0.06	16 x Ø1.14
DN450	18"	17.24	17.01	25.20	56.42	25.00	22.76	20.98	1.57	0.06	16 x Ø1.26
DN500	20"	19.25	17.99	25.20	62.91	27.52	25.00	22.99	1.69	0.06	20 x Ø1.26
DN600	24"	23.27	20.00	28.35	73.15	32.01	29.51	27.24	1.89	0.06	20 x Ø1.38



FEATURES

- Investment Cast Body Construction
- Valve Design as per API 600
- Bolted Bonnet Design
- Rising Stem, Non Rising Handwheel
- Outside Screw & Yoke, Flexible Wedge
- Standard in Trim#8 ; Other Trim Materials are available upon request
- Available for Pneumatic or Electric Actuator
- NACE MR0175 is available upon request
- Super Alloy materials for highly corrosive medium are available upon request

AUTOMATION
AVAILABLE

SPECIFICATIONS

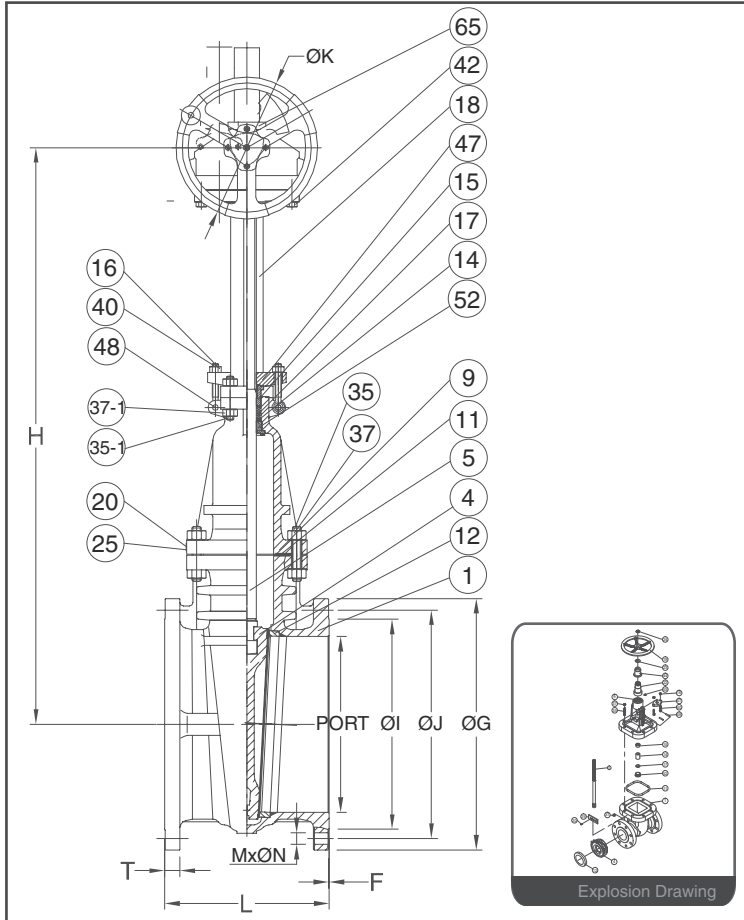
- Size Range 2" ~ 36" (DN50 ~ DN900)
- End Connection Flanged End, RF
- Working Pressure CF8M - 275 PSI (CWP)
WCB - 285 PSI (CWP)

STANDARDS

- Design ASME/ANSI B16.34 / API 600
- Face to Face ASME/ANSI B16.10 Class 150
- Flange Dimension ASME/ANSI B16.5 Class 150 RF
- Material ASTM
- Pressure Testing API 598

CERTIFICATE

- Quality Assurance ISO 9001
- Material Certificate EN 10204-3.1 MTR
- CE Approval PED 97/23/EC Module H
- Canadian Certificate CRN



MATERIAL LIST

NO.	PART NAME	MATERIAL (more options available)
1	BODY	ASTM A216 Gr.WCB
4	DISC	ASTM A216 Gr.WCB + 13Cr.
5	STEM	ASTM A182 Gr.F6A
9	BONNET	ASTM A216 Gr.WCB
11	GASKET	SS304 + GRAPHITE (SPW)
12	SEAT RING	ASTM A105 + STELLITE#6
14	STEM PACKING	SS304 + GRAPHITE
15	GLAND	ASTM A276 TYPE 410
16	GLAND NUT	ASTM A194 Gr.2H
17	PACKING	GRAPHITE
18	YOKE	ASTM A216 Gr.WCB
20	RIVET	SS304
25	NAME PLATE	SS304
35/35-1	STUD (BOLT)	ASTM A193 Gr.B7
37/37-1	STUD BOLT NUT	ASTM A194 Gr.2H
40	EYE BOLT	ASTM A193 Gr.B7
42	GLAND BOLT	ASTM A29 TYPE 1035
47	GLAND FLANGE	ASTM A216 Gr.WCB
48	PIN	ASTM A29 TYPE 1025
52	BACK SEAT	ASTM A276 TYPE 410
65	GEAR BOX	ASTM A276 Gr.410

DIMENSION

SIZE		PORT	L	ØK	H	ØG	ØJ	ØI	T	F	M x ØN
DN350	14"	337	381	460	1137	533	476.0	413	35.0	1.6	12 x Ø29
DN400	16"	387	406	460	1286	597	540.0	470	37.0	1.6	16 x Ø29
DN450	18"	438	432	610	1439	635	578.0	533	40.0	1.6	16 x Ø32
DN500	20"	489	457	610	1593	699	635.0	584	43.0	1.6	20 x Ø32
DN600	24"	591	508	610	1850	813	749.5	692	48.0	1.6	20 x Ø35
DN700	28"	692	610	640	2245	925	836.6	800	71.5	1.6	28 x Ø35
DN750	30"	743	610	640	2311	984	914.5	857	75.0	1.6	28 x Ø35
DN900	36"	876	711	800	2512	1168	1086.0	1022	91.0	1.6	32 x Ø41

DIMENSION

SIZE		PORT	L	ØK	H	ØG	ØJ	ØI	T	F	M x ØN
DN350	14"	13.27	15.00	18.11	44.76	20.98	18.74	16.26	1.38	0.06	12 x Ø1.14
DN400	16"	15.24	15.98	18.11	50.63	23.50	21.26	18.50	1.46	0.06	16 x Ø1.14
DN450	18"	17.24	17.01	24.02	56.65	25.00	22.76	20.98	1.57	0.06	16 x Ø1.26
DN500	20"	19.25	17.99	24.02	62.72	27.52	25.00	22.99	1.69	0.06	20 x Ø1.26
DN600	24"	23.27	20.00	24.02	72.83	32.01	29.51	27.24	1.89	0.06	20 x Ø1.38
DN700	28"	27.24	24.02	25.20	88.39	36.42	34.00	31.50	2.81	0.06	28 x Ø1.38
DN750	30"	29.25	24.02	25.20	90.98	38.74	36.00	33.74	2.95	0.06	28 x Ø1.38
DN900	36"	34.49	27.99	31.50	98.90	45.98	42.76	40.24	3.58	0.06	32 x Ø1.61