

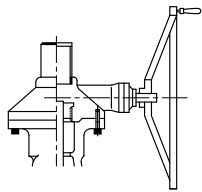
Fig No:GTF-JIS 10K 1/2"~24"
DN15~DN600

Features:

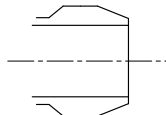
- Flexible wedge
- Outside Screw and Yoke, Rising stem design, Non-rising hand wheel
- 8" & larger with Ball bearing for easy operation
- For General Chemical and Industrial application
- 2" and larger integral Stellite seat face available for longer service life (option)
- Seat face stellite, ground and lapped to a mirror finish

Specifications:

- Valve design according to API 603
- Shell Well Thickness According to ANSI B16.34
- Face to Face According to JIS B2002(1987)
- Flanged Dimension According to JIS B2010(1996)
- Pressure testing according to API598



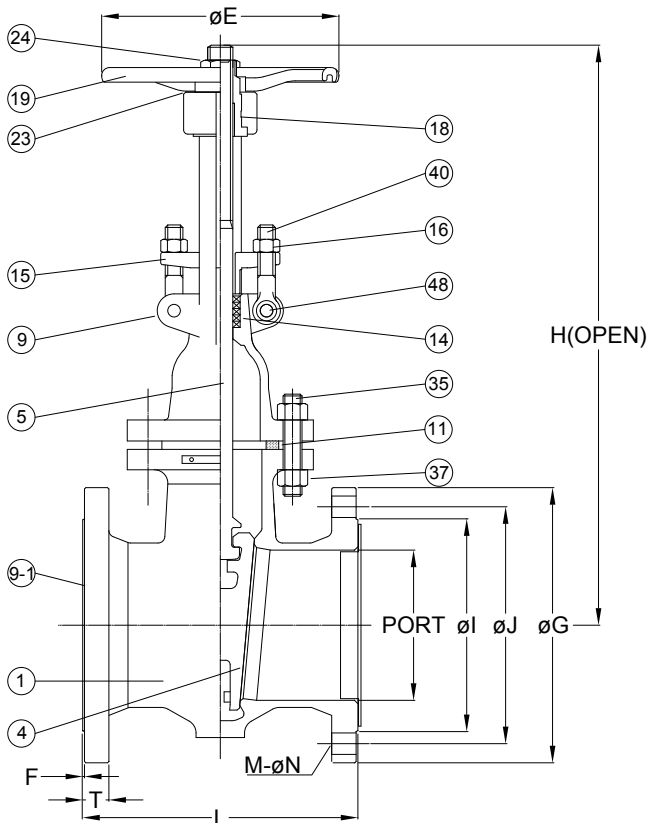
Available With Gear Operator



Buttwelding Ends

MATERIALS LIST

| NO. | SUBJECT | MATERIAL |
|-----|--------------|-----------------------|
| 1 | BODY | SCS14 |
| 4 | DISC | SCS14 |
| 5 | STEM | SUS316 |
| 9 | BONNET | SCS14 |
| 9-1 | COVER | PE |
| 11 | GASKET | V#1500/GRAPHITE/PTFE. |
| 14 | PACKING | PTFE./GRAPHITE |
| 15 | GLAND | SCS14 |
| 16 | EYE BOLT NUT | A194-8 |
| 18 | YOKESLEEVE | BRONZE |
| 19 | HAND WHEEL | DUCTILE IRON |
| 23 | WASHER | SUS304 |
| 24 | WHEEL NUT | STEEL |
| 35 | BONNET BOLT | A193-B8 |
| 37 | BONNET NUT | A194-8 |
| 40 | EYE BOLT | A193-B8 |
| 48 | BOLT PIN | A276-304 |



DIMENSIONS

unit:mm

| DN | NPS | PORT | L | ϕE | H(OPEN) | ϕG | ϕJ | ϕI | T | F | M- ϕN |
|-------|--------|-------|-------|----------|---------|----------|----------|----------|------|-----|-----------------|
| DN15 | 1/2" | 15.0 | 108.0 | 100.0 | 205.0 | 95.0 | 70.0 | 52.0 | 12.0 | 1.0 | 4- $\phi 15.0$ |
| DN20 | 3/4" | 20.0 | 117.0 | 100.0 | 209.0 | 100.0 | 75.0 | 58.0 | 14.0 | 1.0 | 4- $\phi 15.0$ |
| DN25 | 1" | 25.0 | 127.0 | 120.0 | 225.0 | 125.0 | 90.0 | 70.0 | 14.0 | 1.0 | 4- $\phi 19.0$ |
| DN40 | 1-1/2" | 40.0 | 165.0 | 170.0 | 288.0 | 140.0 | 105.0 | 85.0 | 16.0 | 2.0 | 4- $\phi 19.0$ |
| DN50 | 2" | 50.0 | 178.0 | 170.0 | 340.0 | 155.0 | 120.0 | 100.0 | 16.0 | 2.0 | 4- $\phi 19.0$ |
| DN65 | 2-1/2" | 65.0 | 190.0 | 170.0 | 398.0 | 175.0 | 140.0 | 120.0 | 18.0 | 2.0 | 4- $\phi 19.0$ |
| DN80 | 3" | 80.0 | 203.0 | 189.0 | 490.0 | 185.0 | 150.0 | 130.0 | 18.0 | 2.0 | 8- $\phi 19.0$ |
| DN100 | 4" | 100.0 | 229.0 | 222.0 | 577.0 | 210.0 | 175.0 | 155.0 | 18.0 | 2.0 | 8- $\phi 19.0$ |
| DN125 | 5" | 125.0 | 254.0 | 290.0 | 695.0 | 250.0 | 210.0 | 185.0 | 20.0 | 2.0 | 8- $\phi 23.0$ |
| DN150 | 6" | 150.0 | 267.0 | 290.0 | 770.0 | 280.0 | 240.0 | 215.0 | 22.0 | 2.0 | 8- $\phi 23.0$ |
| DN200 | 8" | 200.0 | 292.0 | 350.0 | 990.0 | 330.0 | 290.0 | 265.0 | 22.0 | 2.0 | 12- $\phi 23.0$ |
| DN250 | 10" | 250.0 | 330.0 | 400.0 | 1115.0 | 400.0 | 355.0 | 325.0 | 24.0 | 2.0 | 12- $\phi 25.0$ |
| DN300 | 12" | 300.0 | 356.0 | 400.0 | 1385.0 | 445.0 | 400.0 | 370.0 | 24.0 | 3.0 | 16- $\phi 25.0$ |
| DN350 | 14" | 350.0 | 381.0 | 500.0 | 1600.0 | 490.0 | 445.0 | 415.0 | 26.0 | 3.0 | 16- $\phi 25.0$ |
| DN400 | 16" | 400.0 | 406.0 | 500.0 | 1700.0 | 560.0 | 510.0 | 475.0 | 28.0 | 3.0 | 16- $\phi 27.0$ |
| DN450 | 18" | 450.0 | 432.0 | 500.0 | 1800.0 | 620.0 | 565.0 | 530.0 | 30.0 | 3.0 | 16- $\phi 27.0$ |
| DN500 | 20" | 500.0 | 457.0 | 600.0 | 1900.0 | 675.0 | 620.0 | 585.0 | 30.0 | 3.0 | 20- $\phi 27.0$ |
| DN600 | 24" | 600.0 | 508.0 | 600.0 | 2100.0 | 795.0 | 730.0 | 690.0 | 32.0 | 3.0 | 24- $\phi 33.0$ |