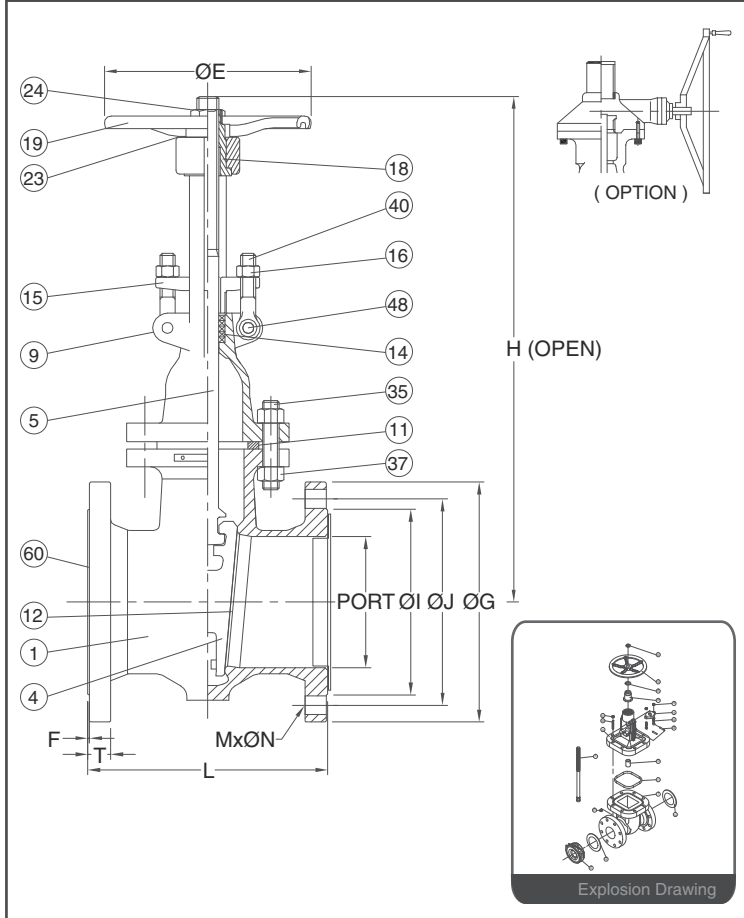


CRN
CERTIFICATED



FEATURES

- Investment Cast Body Construction
- Valve Design as per API 603
- Bolted Bonnet Design
- Rising Stem, Rising Handwheel
- Outside Screw & Yoke, Flexible Wedge
- Integral Seats Design
- NACE MR0175 is available upon request
- Super Alloy materials for highly corrosive medium are available upon request

SPECIFICATIONS

- Size Range 1/2" ~ 26" (DN15 ~ DN650)
- End Connection Flanged End, RF
- Working Pressure CF8M - 275 PSI (CWP)
WCB - 285 PSI (CWP)

STANDARDS

- Design ASME/ANSI B16.34 / API 603
- Face to Face ASME/ANSI B16.10 Class 150
- Flange Dimension ASME/ANSI B16.5 Class 150 RF
- Material ASTM
- Pressure Testing API 598

CERTIFICATE

- Quality Assurance ISO 9001
- Material Certificate EN 10204-3.1 MTR
- CE Approval PED 97/23/EC Module H
- Canadian Certificate CRN

MATERIAL LIST

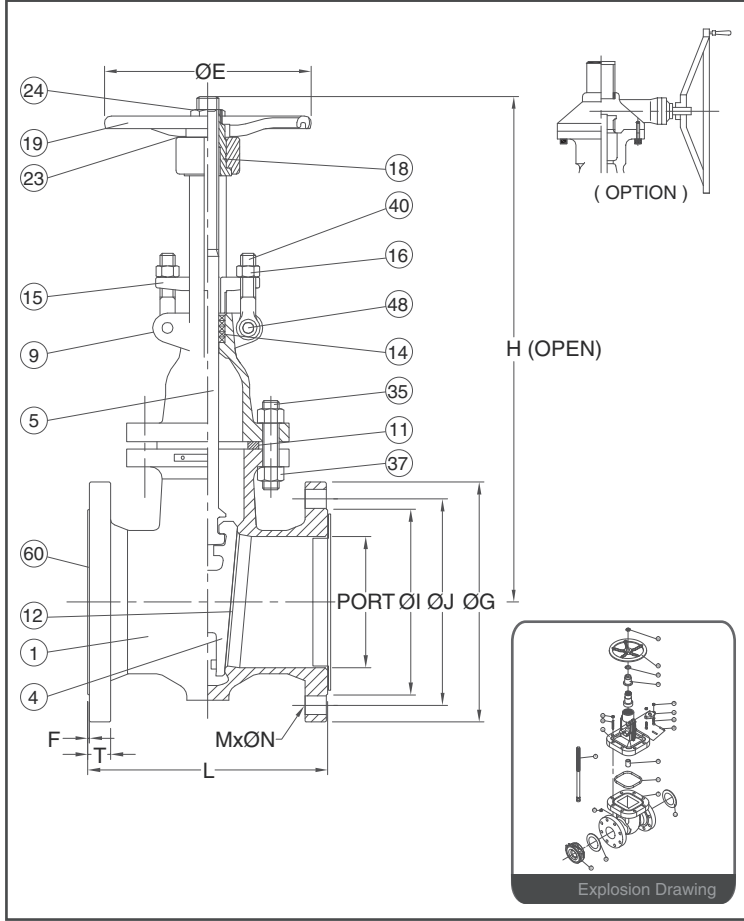
NO.	PART NAME	MATERIAL (more options available)
1	BODY	ASTM A351 Gr.CF8M
4	DISC	ASTM A351 Gr.CF8M
5	STEM	ASTM A276 Gr.316
9	BONNET	ASTM A351 Gr.CF8M
11	GASKET	GRAPHITE
12	SEAT	ASTM A351 Gr.CF8M
14	STEM PACKING	GRAPHITE
15	GLAND	ASTM A351 Gr.CF8
16	EYE BOLT NUT	ASTM A194 Gr.8
18	YOKE SLEEVE	BRONZE
19	HANDWHEEL	CAST IRON
23	HANDWHEEL WASHER	SS304
24	HANDWHEEL NUT	SS41+Zn
35	BONNET BOLT	ASTM A193 Gr.B8
37	BOLT NUT	ASTM A194 Gr.8
40	EYE BOLT	ASTM A193 Gr.B8
48	EYE BOLT PIN	SS304
60	PROTECTIVE COVER	PE

DIMENSION

												unit : mm
SIZE		PORT	L	ØE	H(Open)	ØG	ØJ	ØI	T	F	M x ØN	
DN15	1/2"	15	108	100	205	89	60.5	35	10.0	1.6	4 x Ø16	
DN20	3/4"	20	117	100	209	98	69.9	43	10.0	1.6	4 x Ø16	
DN25	1"	25	127	120	225	108	79.4	51	11.1	1.6	4 x Ø16	
DN40	1-1/2"	40	165	170	288	127	98.4	73	14.2	1.6	4 x Ø16	
DN50	2"	50	178	170	340	152	120.6	92	15.8	1.6	4 x Ø19	
DN65	2-1/2"	65	190	170	398	178	139.7	105	17.5	1.6	4 x Ø19	
DN80	3"	80	203	189	490	190	152.4	127	19.1	1.6	4 x Ø19	

DIMENSION

												unit : inch
SIZE		PORT	L	ØE	H(Open)	ØG	ØJ	ØI	T	F	M x ØN	
DN15	1/2"	0.59	4.25	3.94	8.07	3.50	2.38	1.38	0.39	0.06	4 x Ø0.63	
DN20	3/4"	0.79	4.61	3.94	8.23	3.86	2.75	1.69	0.39	0.06	4 x Ø0.63	
DN25	1"	0.98	5.00	4.72	8.86	4.25	3.13	2.01	0.44	0.06	4 x Ø0.63	
DN40	1-1/2"	1.57	6.50	6.69	11.34	5.00	3.87	2.87	0.56	0.06	4 x Ø0.63	
DN50	2"	1.97	7.01	6.69	13.39	5.98	4.75	3.62	0.62	0.06	4 x Ø0.75	
DN65	2-1/2"	2.56	7.48	6.69	15.67	7.01	5.50	4.13	0.69	0.06	4 x Ø0.75	
DN80	3"	3.15	7.99	7.44	19.29	7.48	6.00	5.00	0.75	0.06	4 x Ø0.75	



FEATURES

- Investment Cast Body Construction
- Valve Design as per API 603
- Bolted Bonnet Design
- Rising Stem, Rising Handwheel
- Outside Screw & Yoke, Flexible Wedge
- Integral Seats Design
- NACE MR0175 is available upon request
- Super Alloy materials for highly corrosive medium are available upon request

SPECIFICATIONS

- Size Range 1/2" ~ 26" (DN15 ~ DN650)
- End Connection Flanged End, RF
- Working Pressure CF8M - 275 PSI (CWP)
WCB - 285 PSI (CWP)

STANDARDS

- Design ASME/ANSI B16.34 / API 603
- Face to Face ASME/ANSI B16.10 Class 150
- Flange Dimension ASME/ANSI B16.5 Class 150 RF
- Material ASTM
- Pressure Testing API 598

CERTIFICATE

- Quality Assurance ISO 9001
- Material Certificate EN 10204-3.1 MTR
- CE Approval PED 97/23/EC Module H
- Canadian Certificate CRN

MATERIAL LIST

NO.	PART NAME	MATERIAL (more options available)
1	BODY	ASTM A351 Gr.CF8M
4	DISC	ASTM A351 Gr.CF8M
5	STEM	ASTM A276 Gr.316
9	BONNET	ASTM A351 Gr.CF8M
11	GASKET	GRAPHITE
12	SEAT	ASTM A351 Gr.CF8M
14	STEM PACKING	GRAPHITE
15	GLAND	ASTM A351 Gr.CF8
16	EYE BOLT NUT	ASTM A194 Gr.8
18	YOKE SLEEVE	BRONZE
19	HANDWHEEL	CAST IRON
23	HANDWHEEL WASHER	SS304
24	HANDWHEEL NUT	SS41+Zn
35	BONNET BOLT	ASTM A193 Gr.B8
37	BOLT NUT	ASTM A194 Gr.8
40	EYE BOLT	ASTM A193 Gr.B8
48	EYE BOLT PIN	SS304
60	PROTECTIVE COVER	PE

DIMENSION

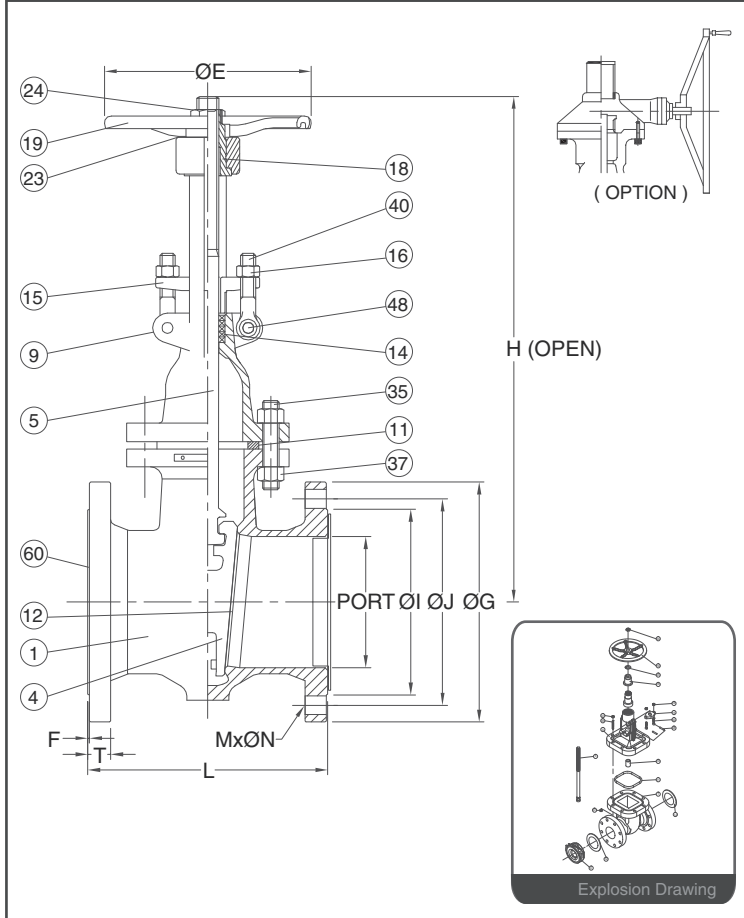
unit : mm

SIZE	PORT	L	ØE	H _(Close)	ØG	ØJ	ØI	T	F	M x ØN
DN100	4"	100	229	577	229	190.5	157	23.9	1.6	8 x Ø19
DN125	5"	125	254	695	254	215.9	186	23.9	1.6	8 x Ø22.2
DN150	6"	150	267	770	279	241.3	216	25.4	1.6	8 x Ø22.2
DN200	8"	200	292	980	343	298.4	270	28.5	1.6	8 x Ø22.2
DN250	10"	250	330	1115	406	361.9	324	30.2	1.6	12 x Ø25.4

DIMENSION

unit : inch

SIZE	PORT	L	ØE	H _(Close)	ØG	ØJ	ØI	T	F	M x ØN
DN100	4"	3.94	9.02	8.74	22.72	9.02	7.50	6.18	0.94	8 x Ø0.75
DN125	5"	4.92	10.00	11.42	27.36	10.00	8.50	7.32	0.94	8 x Ø0.87
DN150	6"	5.91	10.51	11.42	30.31	10.98	9.50	8.50	1.00	8 x Ø0.87
DN200	8"	7.87	11.50	13.78	38.58	13.50	11.75	10.63	1.12	8 x Ø0.87
DN250	10"	9.84	12.99	15.75	43.90	15.98	14.25	12.76	1.19	12 x Ø1.00



FEATURES

- Investment Cast Body Construction
- Valve Design as per API 603
- Bolted Bonnet Design
- Rising Stem, Rising Handwheel
- Outside Screw & Yoke, Flexible Wedge
- Integral Seats Design
- NACE MR0175 is available upon request
- Super Alloy materials for highly corrosive medium are available upon request

SPECIFICATIONS

- Size Range 1/2" ~ 26" (DN15 ~ DN650)
- End Connection Flanged End, RF
- Working Pressure CF8M - 275 PSI (CWP)
WCB - 285 PSI (CWP)

STANDARDS

- Design ASME/ANSI B16.34 / API 603
- Face to Face ASME/ANSI B16.10 Class 150
- Flange Dimension ASME/ANSI B16.5 Class 150 RF
- Material ASTM
- Pressure Testing API 598

CERTIFICATE

- Quality Assurance ISO 9001
- Material Certificate EN 10204-3.1 MTR
- CE Approval PED 97/23/EC Module H
- Canadian Certificate CRN

MATERIAL LIST

NO.	PART NAME	MATERIAL (more options available)
1	BODY	ASTM A351 Gr.CF8M
4	DISC	ASTM A351 Gr.CF8M
5	STEM	ASTM A276 Gr.316
9	BONNET	ASTM A351 Gr.CF8M
11	GASKET	GRAPHITE
12	SEAT	ASTM A351 Gr.CF8M
14	STEM PACKING	GRAPHITE
15	GLAND	ASTM A351 Gr.CF8
16	EYE BOLT NUT	ASTM A194 Gr.8
18	YOKE SLEEVE	BRONZE
19	HANDWHEEL	CAST IRON
23	HANDWHEEL WASHER	SS304
24	HANDWHEEL NUT	SS41+Zn
35	BONNET BOLT	ASTM A193 Gr.B8
37	BOLT NUT	ASTM A194 Gr.8
40	EYE BOLT	ASTM A193 Gr.B8
48	EYE BOLT PIN	SS304
60	PROTECTIVE COVER	PE

DIMENSION

SIZE		PORT	L	ØE	H	ØG	ØJ	ØI	T	F	M x ØN	unit : mm
DN300	12"	300	356	400	1385	483	431.8	381	31.8	1.6	12 x Ø25.4	
DN350	14"	350	381	500	1600	533	476.2	413	35.0	1.6	12 x Ø29.0	
DN400	16"	400	406	500	1700	597	539.8	470	36.6	1.6	16 x Ø29.0	
DN450	18"	450	432	500	1800	635	577.8	533	39.7	1.6	16 x Ø32.0	
DN500	20"	500	457	600	1900	698	635.0	584	42.9	1.6	20 x Ø32.0	
DN600	24"	600	508	600	2100	813	749.3	692	47.7	1.6	20 x Ø35.0	
DN650	26"	650	508	600	2300	870	806.0	749	68.5	1.6	24 x Ø35.0	

DIMENSION

SIZE		PORT	L	ØE	H	ØG	ØJ	ØI	T	F	M x ØN	unit : inch
DN300	12"	11.81	14.02	15.75	54.53	19.02	17.00	15.00	1.25	0.06	12 x Ø1.00	
DN350	14"	13.78	15.00	19.69	62.99	20.98	18.75	16.26	1.38	0.06	12 x Ø1.14	
DN400	16"	15.75	15.98	19.69	66.93	23.50	21.25	18.50	1.44	0.06	16 x Ø1.14	
DN450	18"	17.72	17.01	19.69	70.87	25.00	22.75	20.98	1.56	0.06	16 x Ø1.26	
DN500	20"	19.69	17.99	23.62	74.80	27.48	25.00	22.99	1.69	0.06	20 x Ø1.26	
DN600	24"	23.62	20.00	23.62	82.68	32.01	29.50	27.24	1.88	0.06	20 x Ø1.38	
DN650	26"	25.59	20.00	23.62	90.55	34.25	31.73	29.49	2.70	0.06	24 x Ø1.38	