

FEATURES

- Investment Cast Body Construction
- Y-Type Design
- Screwed Bonnet
- Standard in 1mm Perforated Screen for 1/2" ~ 3"
Standard in 3mm Perforated Screen for 4" ~ 12"
- Other sizes Perforated Screens and Woven Mesh Screens are available upon request
- For General Chemical and Industrial application

SPECIFICATIONS

- Size Range 1/2" ~ 20" (DN15 ~ DN500)
- End Connection Flanged End, RF
- Working Pressure CF8M - 275 PSI (CWP)
WCB - 285 PSI (CWP)
- Temperature Range -4 to 320 °F (-20 to 160 °C) for PTFE.

STANDARDS

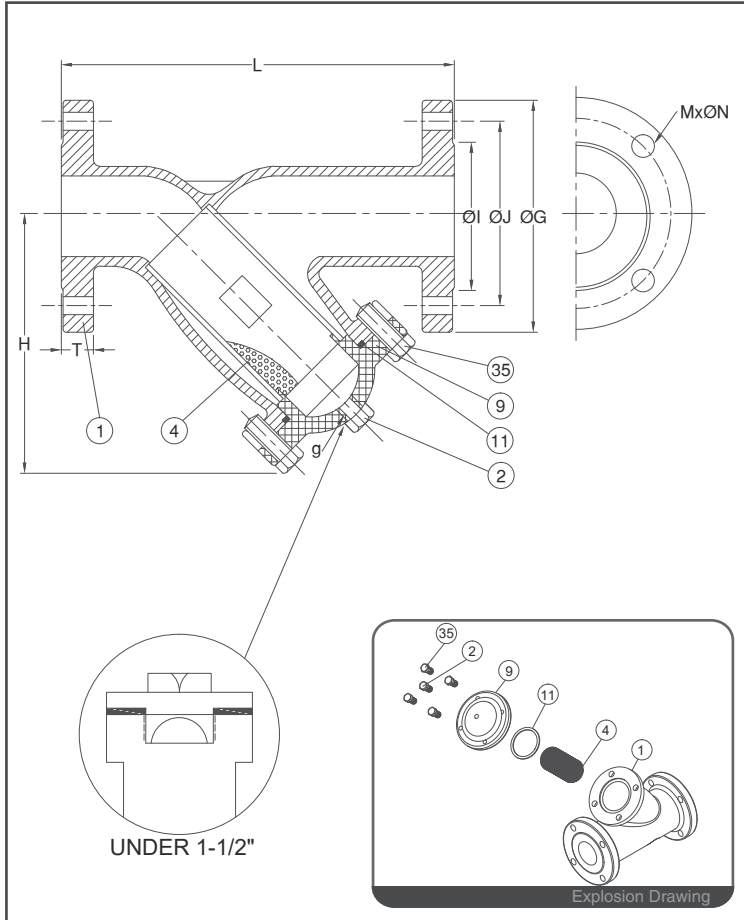
- Design ASME/ANSI B16.34
- Face to Face MFG Standard
- Flange Dimension ASME/ANSI B16.5 Class 150 RF
- Material ASTM
- Pressure Testing API 598

CERTIFICATE

- Quality Assurance ISO 9001
- Material Certificate EN 10204-3.1 MTR
- CE Approval PED 97/23/EC Module H
- Canadian Certificate CRN

MATERIAL LIST			DIMENSION									unit : mm	
NO.	PART NAME	MATERIAL (more options available)	SIZE		L	H	ØG	ØJ	ØI	T	M	ØN	g(NPT)
1	BODY	ASTM A351 Gr.CF8M	DN15	1/2"	152	70	89	60.5	35	11.2	4	15	
2	PLUG	ASTM A351 Gr.CF8M	DN20	3/4"	189	78	99	70.0	43	11.2	4	15	
4	PERFORATED SCREEN	SS304	DN25	1"	189	92	108	79.0	51	11.2	4	15	
9	BONNET	ASTM A351 Gr.CF8M	DN40	1-1/2"	180	109	127	98.5	73	14.3	4	15	
11	GASKET	PTFE.	DN50	2"	218	146	152	120.5	92	15.9	4	19	1/2"
35	BODY BOLT	ASTM A193 Gr.B8	DN65	2-1/2"	261	180	178	139.5	105	17.5	4	19	3/4"

			DIMENSION									unit : inch	
			SIZE		L	H	ØG	ØJ	ØI	T	M	ØN	g(NPT)
			DN15	1/2"	5.98	2.75	3.50	2.38	1.37	0.44	4	0.59	
			DN20	3/4"	7.44	3.07	3.89	2.75	1.69	0.44	4	0.59	
			DN25	1"	7.44	3.62	4.25	3.11	2.00	0.44	4	0.59	
			DN40	1-1/2"	7.08	4.29	5.00	3.87	2.87	0.56	4	0.59	
			DN50	2"	8.58	5.74	5.98	4.74	3.62	0.62	4	0.74	1/2"
			DN65	2-1/2"	10.27	7.08	7.00	5.49	4.13	0.68	4	0.74	3/4"



FEATURES

- Investment Cast Body Construction
- Y-Type Design
- Screwed Bonnet
- Standard in 1mm Perforated Screen for 1/2" ~ 3"
Standard in 3mm Perforated Screen for 4" ~ 12"
- Other sizes Perforated Screens and Woven Mesh Screens are available upon request
- For General Chemical and Industrial application

SPECIFICATIONS

- Size Range 1/2" ~ 20" (DN15 ~ DN500)
- End Connection Flanged End, RF
- Working Pressure CF8M - 275 PSI (CWP)
WCB - 285 PSI (CWP)
- Temperature Range -4 to 320 °F (-20 to 160 °C) for PTFE.

STANDARDS

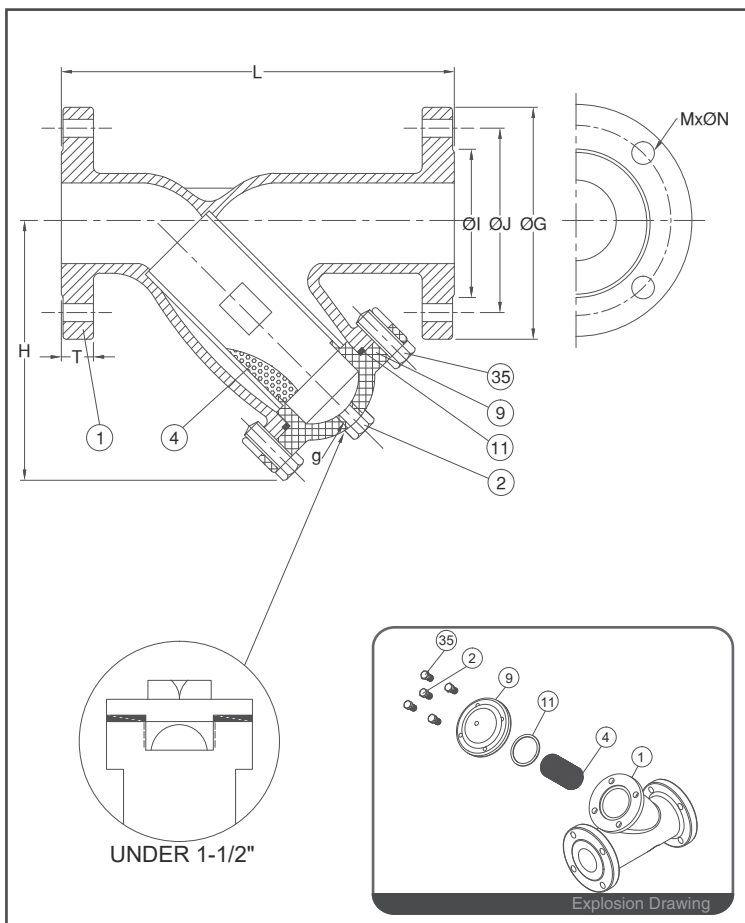
- Design ASME/ANSI B16.34
- Face to Face MFG Standard
- Flange Dimension ASME/ANSI B16.5 Class 150 RF
- Material ASTM
- Pressure Testing API 598

CERTIFICATE

- Quality Assurance ISO 9001
- Material Certificate EN 10204-3.1 MTR
- CE Approval PED 97/23/EC Module H
- Canadian Certificate CRN

MATERIAL LIST			DIMENSION									unit : mm	
NO.	PART NAME	MATERIAL (more options available)	SIZE		L	H	ØG	ØJ	ØI	T	M	ØN	g(NPT)
			1	BODY	ASTM A351 Gr.CF8M	DN80	3"	295	200	190	152.5	127	19.1
2	PLUG	ASTM A351 Gr.CF8M	DN100	4"	361	240	229	190.5	157	23.9	8	19	1-1/2"
4	PERFORATED SCREEN	SS304	DN125	5"	470	300	254	216.0	186	24.0	8	22	2"
9	BONNET	ASTM A351 Gr.CF8M	DN150	6"	469	340	279	241.5	216	25.4	8	22	2"
11	GASKET	PTFE.	DN200	8"	633	460	343	298.5	270	28.6	8	22	2"
35	BODY BOLT	ASTM A193 Gr.B8	DN250	10"	663	495	406	362.0	324	30.2	12	25	2"

			DIMENSION									unit : inch	
			SIZE		L	H	ØG	ØJ	ØI	T	M	ØN	g(NPT)
						DN80	3"	11.61	7.87	7.48	6.00	5.00	0.75
			DN100	4"	14.21	9.44	9.01	7.50	6.18	0.94	8	0.74	1-1/2"
			DN125	5"	18.50	11.81	10.00	8.50	7.32	0.94	8	0.86	2"
			DN150	6"	18.46	13.38	10.98	9.50	8.50	1.00	8	0.86	2"
			DN200	8"	24.92	18.11	13.50	11.75	10.62	1.12	8	0.86	2"
			DN250	10"	26.10	19.48	15.98	14.25	12.75	1.18	12	0.98	2"



FEATURES

- Investment Cast Body Construction
- Y-Type Design
- Screwed Bonnet
- Standard in 1mm Perforated Screen for 1/2" ~ 3"
Standard in 3mm Perforated Screen for 4" ~ 12"
- Other sizes Perforated Screens and Woven Mesh Screens are available upon request
- For General Chemical and Industrial application

SPECIFICATIONS

- Size Range 1/2" ~ 20" (DN15 ~ DN500)
- End Connection Flanged End, RF
- Working Pressure CF8M - 275 PSI (CWP)
WCB - 285 PSI (CWP)
- Temperature Range -4 to 320 °F (-20 to 160 °C) for PTFE.

STANDARDS

- Design ASME/ANSI B16.34
- Face to Face MFG Standard
- Flange Dimension ASME/ANSI B16.5 Class 150 RF
- Material ASTM
- Pressure Testing API 598

CERTIFICATE

- Quality Assurance ISO 9001
- Material Certificate EN 10204-3.1 MTR
- CE Approval PED 97/23/EC Module H
- Canadian Certificate CRN

MATERIAL LIST		
NO.	PART NAME	MATERIAL (more options available)
1	BODY	ASTM A351 Gr.CF8M
2	PLUG	ASTM A351 Gr.CF8M
4	PERFORATED SCREEN	SS304
9	BONNET	ASTM A351 Gr.CF8M
11	GASKET	PTFE.
35	BODY BOLT	ASTM A193 Gr.B8

DIMENSION											unit : mm
SIZE	L	H	ØG	ØJ	ØI	T	M	ØN	g(NPT)		
DN300 12"	772	575	483	432	381	31.8	12	25	2"		
DN350 14"	950	736	535	476	413	35.0	12	29	2"		
DN400 16"	1050	736	595	540	470	37.0	16	29	2"		
DN450 18"	1150	885	635	578	533	39.7	16	32	2"		
DN500 20"	1250	960	698	635	584	43.0	20	32	2"		

DIMENSION											unit : inch
SIZE	L	H	ØG	ØJ	ØI	T	M	ØN	g(NPT)		
DN65 2-1/2"	30.39	22.63	19.01	17.00	15.00	1.25	12	0.98	2"		
DN80 3"	37.40	28.97	21.06	18.74	16.25	1.37	12	1.14	2"		
DN100 4"	41.33	28.97	23.42	21.25	18.50	1.45	16	1.14	2"		
DN125 5"	45.27	38.84	25.00	22.75	20.98	1.56	16	1.25	2"		
DN150 6"	49.21	37.79	27.48	25.00	22.99	1.69	20	1.25	2"		