

FEATURES

- Investment Cast Body Construction
- Valve Design as per API 603 & BS1868
- Swing Type & Bolted Bonnet Design
- Full enclosed Gasket
- Disc assembly - All parts are accessible from top
- 2" and larger integral Stellite seat face available for longer service life **OPTION**
- NACE MR0175 is available upon request
- Super Alloy materials for highly corrosive medium are available upon request

SPECIFICATIONS

- Size Range 1/2" ~ 24" (DN15 ~ DN600)
- End Connection Flanged End, RF
- Working Pressure CF8M - 275 PSI (CWP)
WCB - 285 PSI (CWP)

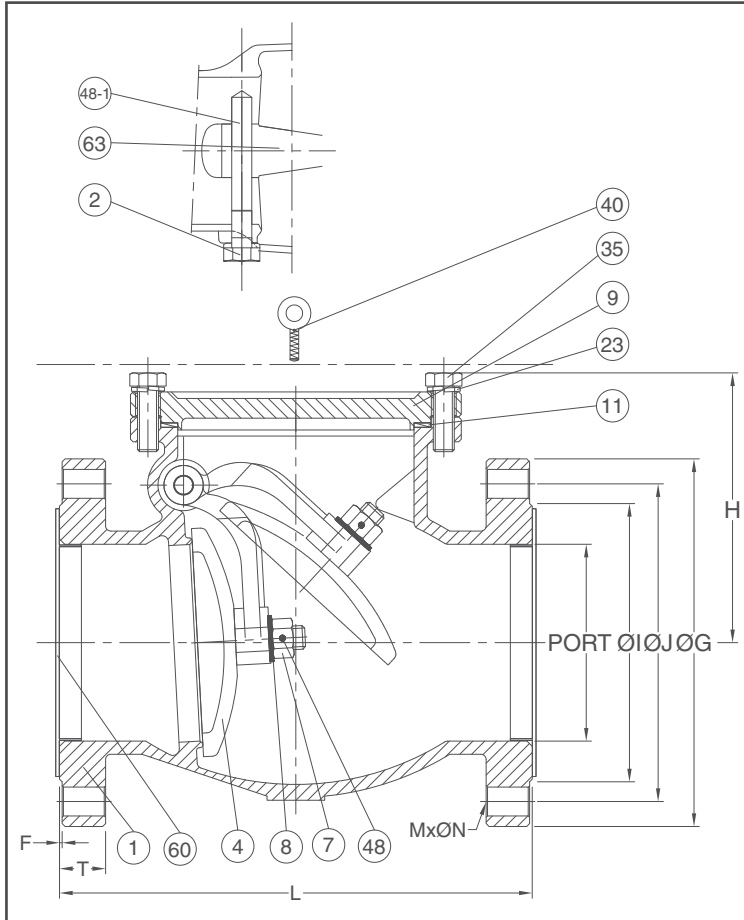
STANDARDS

- Design ASME/ANSI B16.34 / API 603 / BS1868
- Face to Face ASME/ANSI B16.10 Class 150
- Flange Dimension ASME/ANSI B16.5 Class 150 RF
- Material ASTM
- Pressure Testing API 598

CERTIFICATE

- Quality Assurance ISO 9001
- Material Certificate EN 10204-3.1 MTR
- CE Approval PED 97/23/EC Module H
- Canadian Certificate CRN

MATERIAL LIST			Trim#8	DIMENSION								unit : mm		
NO.	PART NAME	MATERIAL (more options available)		SIZE	PORT	L	H	ØG	ØJ	ØI	T	F	M x ØN	
1	BODY	ASTM A351 Gr.CF8M		DN15	1/2"	15.0	108.0	57.0	89.0	60.3	35.0	9.5	1.6	4 x Ø16.0
2	PLUG	SS316		DN20	3/4"	20.0	117.0	58.0	98.0	69.8	43.0	10.0	1.6	4 x Ø16.0
4	DISC	ASTM A351 Gr.CF8M		DN25	1"	25.0	127.0	68.0	108.0	79.4	51.0	11.1	1.6	4 x Ø16.0
7	DISC NUT	SS316		DN40	1-1/2"	40.0	165.0	80.0	127.0	98.4	73.0	14.2	1.6	4 x Ø16.0
8	DISC WASHER	SS304		DN50	2"	50.0	203.0	102.0	152.0	120.6	92.0	15.8	1.6	4 x Ø19.0
9	BONNET	ASTM A351 Gr.CF8M		DN65	2-1/2"	65.0	216.0	120.0	178.0	139.7	105.0	17.5	1.6	4 x Ø19.0
11	GASKET	GRAPHITE		DIMENSION										
35	BODY BOLT (STUD)	ASTM A193 Gr.B8		unit : inch										
36	BOLT WASHER	SS304		SIZE	PORT	L	H	ØG	ØJ	ØI	T	F	M x ØN	
40	EYE BOLT	SS304		DN15	1/2"	0.59	4.25	2.24	3.50	2.37	1.38	0.37	0.06	4 x Ø0.63
48	DISC NUT PIN	SS316		DN20	3/4"	0.79	4.61	2.28	3.86	2.75	1.69	0.39	0.06	4 x Ø0.63
48-1	DISC PIN	SS316		DN25	1"	0.98	5.00	2.68	4.25	3.13	2.01	0.44	0.06	4 x Ø0.63
60	COVER	PE		DN40	1-1/2"	1.57	6.50	3.15	5.00	3.87	2.87	0.56	0.06	4 x Ø0.63
63	HINGE (ARM)	ASTM A351 Gr.CF8M		DN50	2"	1.97	7.99	4.02	5.98	4.75	3.62	0.62	0.06	4 x Ø0.75
				DN65	2-1/2"	2.56	8.50	4.72	7.01	5.50	4.13	0.69	0.06	4 x Ø0.75



FEATURES

- Investment Cast Body Construction
- Valve Design as per API 603 & BS1868
- Swing Type & Bolted Bonnet Design
- Full enclosed Gasket
- Disc assembly - All parts are accessible from top
- 2" and larger integral Stellite seat face available for longer service life **OPTION**
- NACE MR0175 is available upon request
- Super Alloy materials for highly corrosive medium are available upon request

SPECIFICATIONS

- Size Range 1/2" ~ 24" (DN15 ~ DN600)
- End Connection Flanged End, RF
- Working Pressure CF8M - 275 PSI (CWP)
WCB - 285 PSI (CWP)

STANDARDS

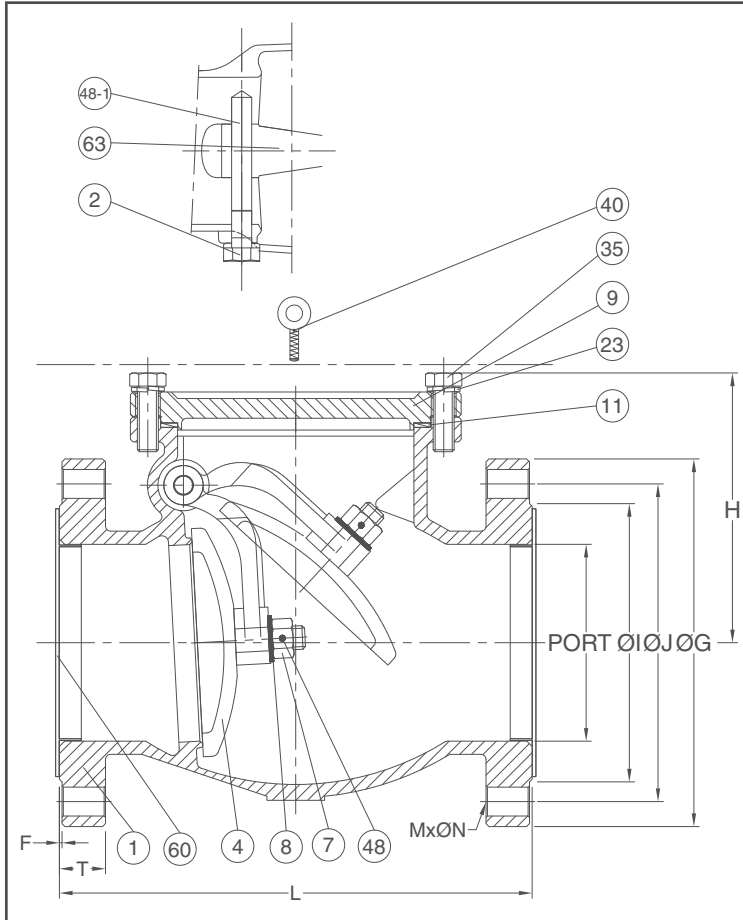
- Design ASME/ANSI B16.34 / API 603 / BS1868
- Face to Face ASME/ANSI B16.10 Class 150
- Flange Dimension ASME/ANSI B16.5 Class 150 RF
- Material ASTM
- Pressure Testing API 598

CERTIFICATE

- Quality Assurance ISO 9001
- Material Certificate EN 10204-3.1 MTR
- CE Approval PED 97/23/EC Module H
- Canadian Certificate CRN

MATERIAL LIST			Trim#8	DIMENSION								unit : mm		
NO.	PART NAME	MATERIAL (more options available)		SIZE	PORT	L	H	ØG	ØJ	ØI	T	F	M x ØN	
1	BODY	ASTM A216 Gr.WCB		DN80	3"	80.0	241.0	125.0	190.0	152.4	127.0	19.1	1.6	4 x Ø19.0
2	PLUG	ASTM A276 TYPE 410		DN100	4"	100.0	292.0	168.0	229.0	190.5	157.0	23.9	1.6	8 x Ø19.0
3	PLUG SEAL	ASTM A276 TYPE 304		DN125	5"	125.0	330.0	178.0	254.0	215.9	186.0	23.9	1.6	8 x Ø22.2
4	DISC	ASTM A216 Gr.WCB + 13Cr.		DN150	6"	150.0	356.0	200.0	279.0	241.3	216.0	25.4	1.6	8 x Ø22.2
7	DISC NUT	ASTM A276 TYPE 410		DN200	8"	200.0	495.0	235.0	343.0	298.4	270.0	28.5	1.6	8 x Ø22.2
8	DISC WASHER	ASTM A276 TYPE 410		DN250	10"	250.0	622.0	350.0	406.0	361.9	324.0	30.2	1.6	12 x Ø25.4
9	BONNET	ASTM A216 Gr.WCB												
11	GASKET	SS304 + GRAPHITE (SPW)												
12	SEAT RING	ASTM A105 + STELLITE#6												
20	RIVET	SS304												
25	NAME PLATE	SS304												
35	BODY BOLT (STUD)	ASTM A193 Gr.B7												
37	STUD BOLT NUT	ASTM A194 Gr.2H												
40	EYE BOLT	CARBON STEEL												
48	DISC NUT PIN	ASTM A276 TYPE 410												
48-1	DISC PIN	ASTM A182 Gr.F6A												
63	HINGE	ASTM A216 Gr.WCB												

DIMENSION								unit : inch		
SIZE	PORT	L	H	ØG	ØJ	ØI	T	F	M x ØN	
DN80	3"	3.15	9.49	4.92	7.48	6.00	5.00	0.75	0.06	4 x Ø0.75
DN100	4"	3.94	11.50	6.61	9.02	7.50	6.18	0.94	0.06	8 x Ø0.75
DN125	5"	4.92	12.99	7.01	10.00	8.50	7.32	0.94	0.06	8 x Ø0.87
DN150	6"	5.91	14.02	7.87	10.98	9.50	8.50	1.00	0.06	8 x Ø0.87
DN200	8"	7.87	19.49	9.25	13.50	11.75	10.63	1.12	0.06	8 x Ø0.87
DN250	10"	9.84	24.49	13.78	15.98	14.25	12.76	1.19	0.06	12 x Ø1.00



FEATURES

- Investment Cast Body Construction
- Valve Design as per API 603 & BS1868
- Swing Type & Bolted Bonnet Design
- Full enclosed Gasket
- Disc assembly - All parts are accessible from top
- 2" and larger integral Stellite seat face available for longer service life **OPTION**
- NACE MR0175 is available upon request
- Super Alloy materials for highly corrosive medium are available upon request

SPECIFICATIONS

- Size Range 1/2" ~ 24" (DN15 ~ DN600)
- End Connection Flanged End, RF
- Working Pressure CF8M - 275 PSI (CWP)
WCB - 285 PSI (CWP)

STANDARDS

- Design ASME/ANSI B16.34 / API 603 / BS1868
- Face to Face ASME/ANSI B16.10 Class 150
- Flange Dimension ASME/ANSI B16.5 Class 150 RF
- Material ASTM
- Pressure Testing API 598

CERTIFICATE

- Quality Assurance ISO 9001
- Material Certificate EN 10204-3.1 MTR
- CE Approval PED 97/23/EC Module H
- Canadian Certificate CRN

MATERIAL LIST			Trim#8	DIMENSION								unit : mm		
NO.	PART NAME	MATERIAL (more options available)		SIZE	PORT	L	H	ØG	ØJ	ØI	T	F	M x ØN	
1	BODY	ASTM A216 Gr.WCB		DN300	12"	300.0	699.0	380.0	483.0	431.8	381.0	31.8	1.6	12 x Ø25.4
2	PLUG	ASTM A276 TYPE 410		DN350	14"	350.0	787.0	430.0	533.0	476.2	413.0	35.1	1.6	12 x Ø29.0
3	PLUG SEAL	ASTM A276 TYPE 304		DN400	16"	400.0	864.0	450.0	597.0	539.7	470.0	36.6	1.6	16 x Ø29.0
4	DISC	ASTM A216 Gr.WCB + 13Cr.		DN450	18"	450.0	978.0	650.0	635.0	577.8	533.0	39.6	1.6	16 x Ø32.0
7	DISC NUT	ASTM A276 TYPE 410		DN500	20"	500.0	978.0	650.0	698.0	635.0	584.0	42.9	1.6	20 x Ø32.0
8	DISC WASHER	ASTM A276 TYPE 410		DN550	22"	550.0	985.0	650.0	750.0	692.0	641.0	46.0	1.6	20 x Ø35.0
9	BONNET	ASTM A216 Gr.WCB		DN600	24"	600.0	1295.0	900.0	813.0	749.3	692.1	47.8	1.6	20 x Ø35.0
11	GASKET	SS304 + GRAPHITE (SPW)												
12	SEAT RING	ASTM A105 + STELLITE#6												
20	RIVET	SS304												
25	NAME PLATE	SS304												
35	BODY BOLT (STUD)	ASTM A193 Gr.B7		DN300	12"	11.81	27.52	14.96	19.02	17.00	15.00	1.25	0.06	12 x Ø1.00
37	STUD BOLT NUT	ASTM A194 Gr.2H		DN350	14"	13.78	30.98	16.93	20.98	18.75	16.97	1.38	0.06	12 x Ø1.14
40	EYE BOLT	CARBON STEEL		DN400	16"	15.75	34.02	17.72	23.50	21.25	18.50	1.44	0.06	16 x Ø1.14
48	DISC NUT PIN	ASTM A276 TYPE 410		DN450	18"	17.72	38.50	25.59	25.00	22.75	20.98	1.56	0.06	16 x Ø1.26
48-1	DISC PIN	ASTM A182 Gr.F6A		DN500	20"	19.69	38.50	25.59	27.48	25.00	22.99	1.69	0.06	20 x Ø1.26
63	HINGE	ASTM A216 Gr.WCB		DN550	22"	21.65	38.78	25.59	29.53	27.24	25.24	1.81	0.06	20 x Ø1.38
				DN600	24"	23.62	50.98	35.43	32.01	29.50	27.25	1.88	0.06	20 x Ø1.38

DIMENSION

unit : inch

SIZE	PORT	L	H	ØG	ØJ	ØI	T	F	M x ØN
DN300	12"	11.81	27.52	14.96	19.02	17.00	15.00	1.25	0.06
DN350	14"	13.78	30.98	16.93	20.98	18.75	16.97	1.38	0.06
DN400	16"	15.75	34.02	17.72	23.50	21.25	18.50	1.44	0.06
DN450	18"	17.72	38.50	25.59	25.00	22.75	20.98	1.56	0.06
DN500	20"	19.69	38.50	25.59	27.48	25.00	22.99	1.69	0.06
DN550	22"	21.65	38.78	25.59	29.53	27.24	25.24	1.81	0.06
DN600	24"	23.62	50.98	35.43	32.01	29.50	27.25	1.88	0.06