

Fig No. GB-200 Full Bore
1/4" ~ 2" DN8 ~ DN50



Features :

- Investment casting component
- Rising Stem
- Screwed bonnet, Conical seat design
- For general chemical and industrial application

Standard Compliance :

- Body wall thickness : EN 12516-1/3
- Threaded end : BS 21 (BSP)
- BSPT
- ISO 228-1
- DIN 2999
- ISO 7-1Rp

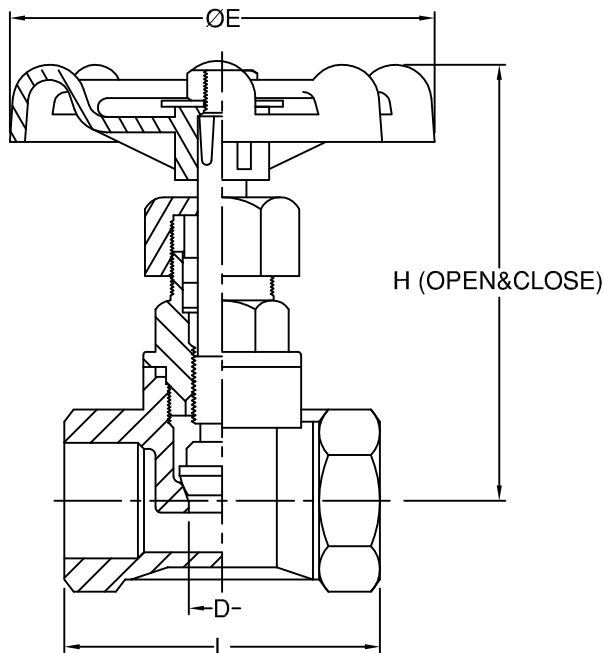
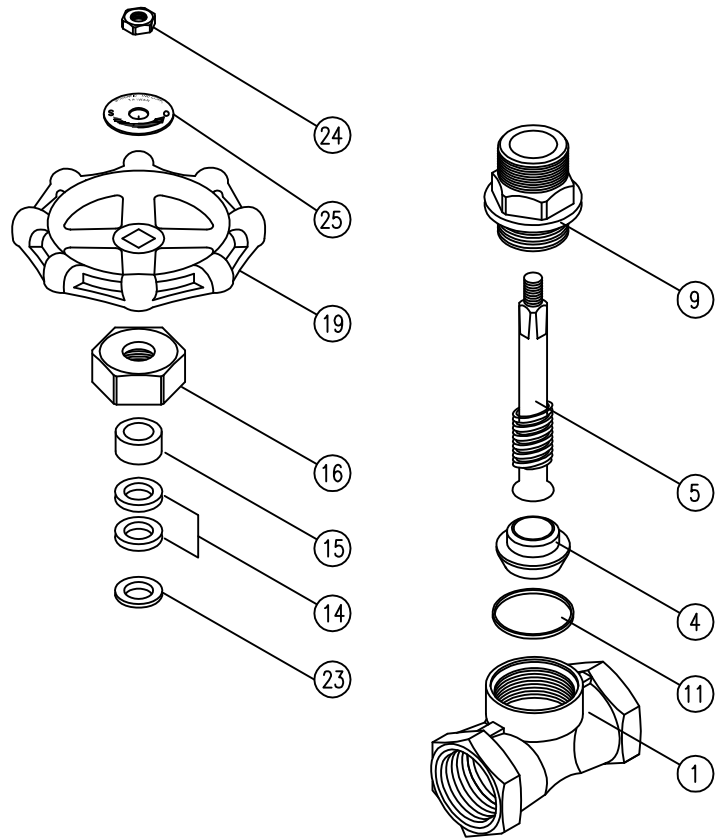
- Body material : EN 1503-1
- Pressure testing : EN 12266

Specification :

- End connection : Threaded end
- Working pressure : 16 Bar (CWP)
- Temperature : -20 ~ 180° C

MATERIALS LIST

| NO. | PART NAME | MATERIAL |
|-----|--------------|-------------------|
| 1 | BODY | 1.4408/EN1503-1 |
| 4 | DISC | SS316 |
| 5 | STEM | SS316 |
| 9 | BONNET | 1.4408/EN1503-1 |
| 11 | BODY SEAL | PTFE. |
| 14 | STEM PACKING | PTFE. |
| 15 | GLAND | SS304 |
| 16 | GLAND NUT | ASTM A351 Gr.CF8M |
| 19 | HANDWHEEL | ADC12 |
| 23 | WASHER | SS316 |
| 24 | H.W. NUT | SS304 |
| 25 | NAME PLATE | ALUMINUM |



DIMENSIONS

| SIZE | | L | ØE | H _(OPEN) | H _(CLOSE) | D |
|------|--------|-------|-------|---------------------|----------------------|------|
| DN8 | 1/4" | 52.0 | 70.0 | 79.0 | 73.0 | 12.0 |
| DN10 | 3/8" | 52.0 | 70.0 | 79.0 | 73.0 | 12.0 |
| DN15 | 1/2" | 52.0 | 70.0 | 79.0 | 73.0 | 12.0 |
| DN20 | 3/4" | 60.0 | 70.0 | 94.0 | 85.0 | 15.0 |
| DN25 | 1" | 72.0 | 80.0 | 101.0 | 91.0 | 20.0 |
| DN32 | 1-1/4" | 81.0 | 80.0 | 119.0 | 103.0 | 25.0 |
| DN40 | 1-1/2" | 90.0 | 90.0 | 142.0 | 124.0 | 32.0 |
| DN50 | 2" | 101.0 | 100.0 | 159.0 | 139.0 | 40.0 |

unit:mm