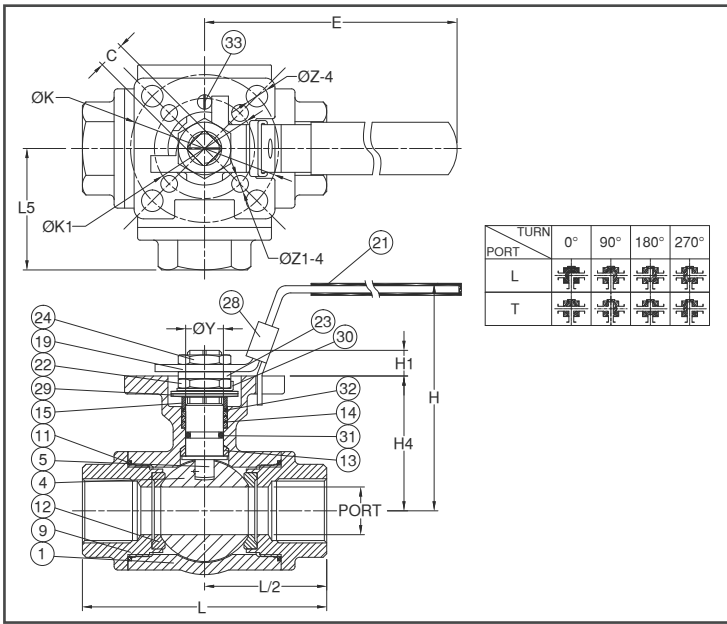
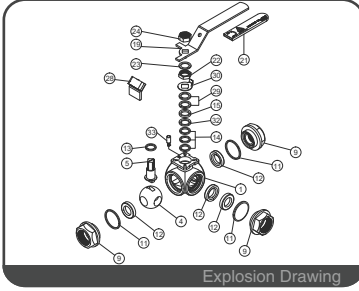
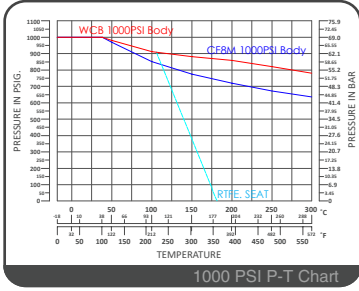


CRN
CERTIFICATED



FEATURES

- Investment Cast Body Construction
- ISO 5211 Direct Mounting Flange
- 3 Pieces of Seats Design
- Blow-Out-Proof Stem Design
- Available for either T-Port or L-Port
- Locking Device
- Super Alloy materials for highly corrosive medium are available upon request

AUTOMATION
AVAILABLE

SPECIFICATIONS

- Size Range 1/4" ~ 2" (DN8 ~ DN50)
- End Connection Threaded Ends
- Working Pressure 1000PSI (CWP) for 1/4" ~ 2"
- Steam Pressure 150 PSIG. Saturated Steam for RTFE.
- Temperature Range -4 to 356 °F (-20 to 180 °C) for RTFE.

STANDARDS

- Design EN 12516-1/3
- Threaded End NPT/ BS 21 (BSP) / BSPT / ISO 228-1 / DIN 2999 / ISO 7-1Rp
- Face to Face MFG
- Material ASTM
- Pressure Testing API 598

CERTIFICATE

- Quality Assurance ISO 9001
- Material Certificate EN 10204-3.1 MTR
- CE Approval PED 97/23/EC Module H
- Canadian Certificate CRN

MATERIAL LIST

NO.	PART NAME	MATERIAL (more options available)
1	BODY	ASTM A351 Gr.CF8M ASTM A216 Gr.WCB
4	BALL	ASTM A351 Gr.CF8M
5	STEM	ASTM A276 Gr.316
9	END CAP	ASTM A351 Gr.CF8M ASTM A216 Gr.WCB
11	BODY SEAL	PTFE.
12	SEAT	RTFE.(15%G.F.)
13	THRUST WASHER	RTFE.(15%G.F.)
14	STEM PACKING	RTFE.(15%G.F.)
15	GLAND BUSH	SS304
19	HANDLE	SS304
21	HANDLE COVER	PLASTIC
22	STEM NUT	SS304
24	HANDLE NUT	SS304
28	LOCKING DEVICE	SS304
29	BELLEVILLE WASHER	SS304-CSP
30	TAB WASHER	SS304
31	O-RING	VITON®
32	PACKING FOLLOWER	PTFE.+25%G.F.
33	STOP PIN	SS304

DIMENSION

SIZE		PORT	L	L5	E	H	H1	H4	ØK	ØK1	Z	Z1	C	ØY		
DN8	1/4"	11.0	75.7	37.3	112.0	77.5	9.0	38.2	42	F04	6.0	9	9	12.0		
DN10	3/8"	11.0	75.7	37.3	112.0	77.5	9.0	38.2	42	F04	6.0	9	9	12.0		
DN15	1/2"	12.7	75.7	37.3	112.0	77.5	9.0	38.2	42	F04	6.0	9	9	12.0		
DN20	3/4"	16.0	86.6	44.7	112.0	82.0	9.0	45.2	42	F04	6.0	9	9	12.0		
DN25	1"	20.0	102.4	51.4	136.5	93.7	11.0	56.5	50	F05	7.1	11	15.8			
DN32	1-1/4"	25.0	118.2	57.7	188.0	101.1	11.0	61.9	50	F05	7.1	11	15.8			
DN40	1-1/2"	32.0	125.8	62.7	197.5	120.3	14.3	78.3	70	F07	9.2	7.1	14	20.8		
DN50	2"	38.1	149.0	74.6	197.5	129.9	14.0	87.4	70	F07	50	F05	9.2	7.1	14	20.8

DIMENSION

SIZE		PORT	L	L5	E	H	H1	H4	ØK	ØK1	Z	Z1	C	ØY		
DN8	1/4"	0.43	2.98	1.46	4.40	3.05	0.35	1.50	1.65	F04	0.23	0.35	0.47			
DN10	3/8"	0.43	2.98	1.46	4.40	3.05	0.35	1.50	1.65	F04	0.23	0.35	0.47			
DN15	1/2"	0.50	2.98	1.46	4.40	3.05	0.35	1.50	1.65	F04	0.23	0.35	0.47			
DN20	3/4"	0.62	3.40	1.75	4.40	3.22	0.35	1.77	1.65	F04	0.23	0.35	0.47			
DN25	1"	0.78	4.03	2.02	5.37	3.68	0.43	2.22	1.96	F05	0.27	0.43	0.62			
DN32	1-1/4"	0.98	4.65	2.27	7.40	3.98	0.43	2.43	1.96	F05	0.27	0.43	0.62			
DN40	1-1/2"	1.25	4.95	2.46	7.77	4.73	0.56	3.08	2.75	F07	1.96	F05	0.36	0.27	0.55	0.81
DN50	2"	1.50	5.86	2.93	7.77	5.11	0.55	3.44	2.75	F07	1.96	F05	0.36	0.27	0.55	0.81