

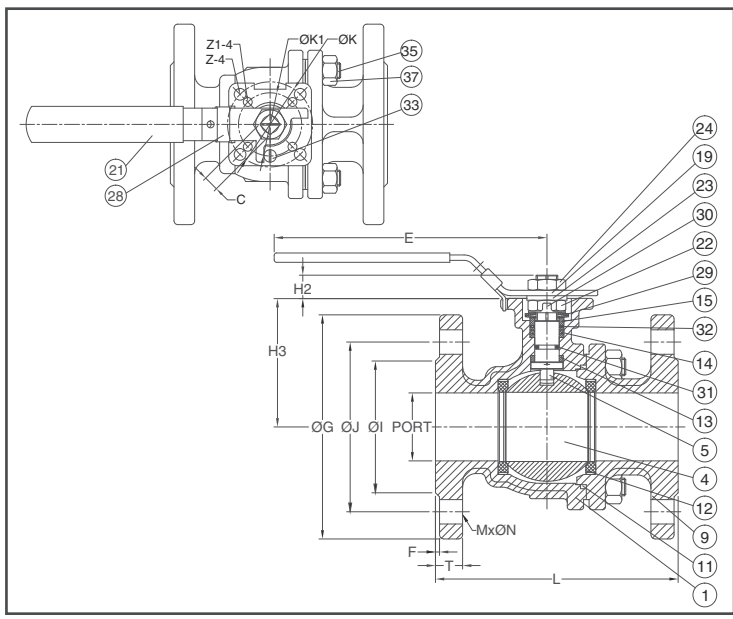
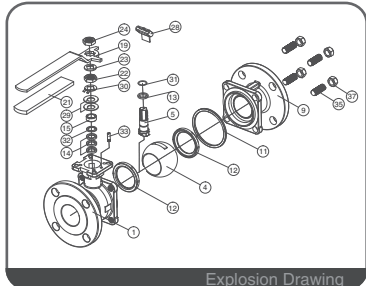
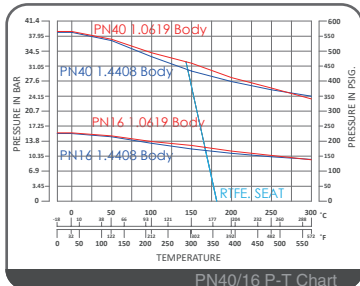


MD-28

Direct Mount Ball Valve

Fugitive Emission / Full Bore

PN40 for DN15 ~ DN50
PN16 for DN65 ~ DN150



FEATURES

- Investment Cast Body Construction
- 2 Pieces Body Design
- ISO 5211 Mounting Flange
- Blow-Out-Proof Stem Design & Anti-Static Device
- Available for Pneumatic or Electric Actuator
- NACE MR0175 is available upon request
- Super Alloy materials for highly corrosive medium are available upon request

AUTOMATION AVAILABLE

SPECIFICATIONS

• Size Range	DN15 ~ DN150 (1/2" ~ 6")
• End Connection	Flanged End, RF
• Working Pressure	1.4408 PN40 - 38.8 Bar at RT 1.0619 PN40 - 39.0 Bar at RT 1.4408 PN16 - 15.5 Bar at RT 1.0619 PN16 - 15.6 Bar at RT
• Steam Pressure	150 PSIG. Saturated Steam for RTFE.
• Temperature Range	-4 to 356 °F (-20 to 180 °C) for RTFE.

STANDARDS

• Design	ISO12516-1/2 / API 608
• Mounting Flange	ISO 5211
• Face to Face	DIN 3202 F4 for DN15 ~ DN100 DIN 3202 F5 for DN125 ~ DN150
• Flange Dimension	PN40 EN1092-1 for DN15 ~ DN50 PN16 EN1092-1 for DN65 ~ DN150
• Material	EN1503-1
• Pressure Testing	EN 12266

CERTIFICATE

• Fire Safe OPTION	API 607 6 th Edition / ISO 10497
• Fugitive Emission	ISO 15848-1 / TA-LUFT
• Quality Assurance	ISO 9001
• Material Certificate	EN 10204-3.1 MTR
• CE Approval	PED 97/23/EC Module H

MATERIAL LIST

NO.	PART NAME	MATERIAL (more options available)
1	BODY	EN1503-1 1.4408 EN1503-1 1.0619
4	BALL	ASTM A351 Gr.CF8M
5	STEM	ASTM A276 Gr.SS316
9	END CAP	EN1503-1 1.4408 EN1503-1 1.0619
11	BODY SEAL	PTFE.
12	SEAT	RTFE.(15%G.F.)
13	THRUST WASHER	RTFE.(15%G.F.)
14	STEM PACKING	RTFE.(15%G.F.)
15	GLAND	SS304
19	HANDLE	SS304
21	HANDLE COVER	PLASTIC
22	STEM NUT	SS304
23	HANDLE WASHER	SS304
24	HANDLE NUT	SS304
28	LOCKING PAD	SS304
29	BELLEVILLE WASHER	SS301
30	TAB WASHER	SS304
31	STEM O-RING	VITON®
32	PACKING FOLLOWER	PTFE.+25%G.F.
33	STOP PIN	SS304
35	BODY STUD	ASTM A193 Gr.B8
37	BOLT NUT	ASTM A194 Gr.8

DIMENSION

SIZE	PORT	L	E	H2	H3	C	ØG	ØJ	ØI	T	F	MxØN	ØK / ØK1	Z / Z1	
DN15	1/2"	15.0	115	112	8.5	48.0	9	95	65	45	16	2.0	4x14	50-F05 / 36-F03	7 / 6
DN20	3/4"	20.0	120	112	8.5	53.5	9	105	75	58	18	2.0	4x14	50-F05 / 36-F03	7 / 6
DN25	1"	25.0	125	136	9.5	64.0	9	115	85	68	18	2.0	4x14	50-F05 / 36-F03	7 / 6
DN32	1-1/4"	32.0	130	185	9.5	71.0	9	140	100	78	18	2.0	4x18	50-F05 / 36-F03	7 / 6
DN40	1-1/2"	38.0	140	198	14.0	76.0	14	150	110	88	18	2.0	4x18	70-F07 / 50-F05	9 / 7
DN50	2"	50.0	150	198	13.7	84.5	14	165	125	102	20	2.0	4x18	70-F07 / 50-F05	9 / 7
DN65	2-1/2"	64.0	170	265	18.0	106.8	17	185	145	122	18	2.0	4x18	102-F10 / 70-F07	12 / 10
DN80	3"	76.0	180	265	18.0	116.0	17	200	160	138	20	2.0	8x18	102-F10 / 70-F07	12 / 10
DN100	4"	100.0	190	325	18.0	154.5	17	220	180	158	20	2.0	8x18	102-F10 / 70-F07	12 / 10

DIMENSION

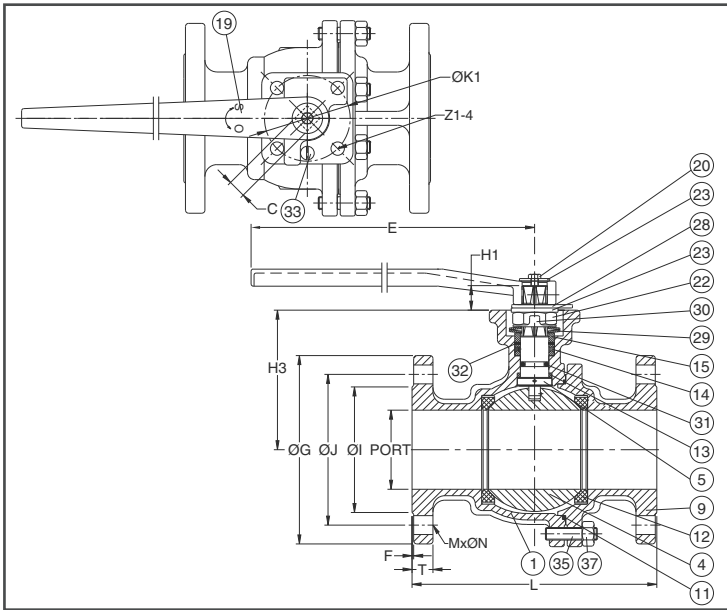
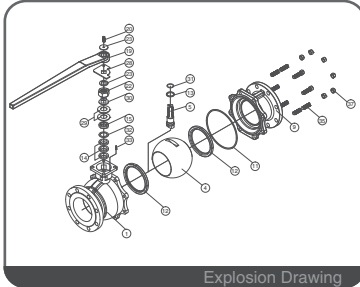
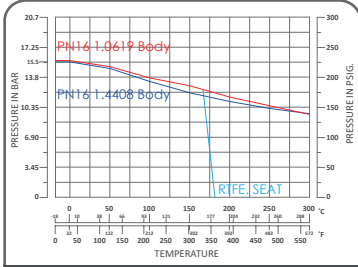
SIZE	PORT	L	E	H2	H3	C	ØG	ØJ	ØI	T	F	MxØN	ØK / ØK1	Z / Z1	
DN15	1/2"	0.59	4.52	4.40	0.33	1.88	0.35	3.74	2.55	1.77	0.62	0.07	4x0.55	1.96-F05/1.41-F03	0.27/0.23
DN20	3/4"	0.78	4.72	4.40	0.33	2.10	0.35	4.13	2.95	2.28	0.70	0.07	4x0.55	1.96-F05/1.41-F03	0.27/0.23
DN25	1"	0.98	4.92	5.35	0.37	2.51	0.35	4.52	3.34	2.67	0.70	0.07	4x0.55	1.96-F05/1.41-F03	0.27/0.23
DN32	1-1/4"	1.25	5.11	7.28	0.37	2.79	0.35	5.51	3.93	3.07	0.70	0.07	4x0.70	1.96-F05/1.41-F03	0.27/0.23
DN40	1-1/2"	1.49	5.51	7.79	0.55	2.99	0.55	5.90	4.33	3.46	0.70	0.07	4x0.70	2.75-F07/1.96-F05	0.35/0.27
DN50	2"	1.96	5.90	7.79	0.53	3.32	0.55	6.49	4.92	4.01	0.78	0.07	4x0.70	2.75-F07/1.96-F05	0.35/0.27
DN65	2-1/2"	2.51	6.69	10.43	0.70	4.20	0.66	7.28	5.70	4.80	0.70	0.07	4x0.70	4.01-F10/2.75-F07	0.47/0.39
DN80	3"	2.99	7.08	10.43	0.70	4.56	0.66	7.87	6.29	5.43	0.78	0.07	8x0.70	4.01-F10/2.75-F07	0.47/0.39
DN100	4"	3.93	7.48	12.79	0.70	6.08	0.66	8.66	7.08	6.22	0.78	0.07	8x0.70	4.01-F10/2.75-F07	0.47/0.39



MD-28

Direct Mount Ball Valve

Fugitive Emission / Full Bore
 PN40 for DN15 ~ DN50
 PN16 for DN65 ~ DN150



FEATURES

- Investment Cast Body Construction
- 2 Pieces Body Design
- ISO 5211 Mounting Flange
- Blow-Out-Proof Stem Design & Anti-Static Device
- Available for Pneumatic or Electric Actuator
- NACE MR0175 is available upon request
- Super Alloy materials for highly corrosive medium are available upon request

AUTOMATION AVAILABLE

SPECIFICATIONS

- Size Range DN15 ~ DN150 (1/2" ~ 6")
- End Connection Flanged End, RF
- Working Pressure
 - 1.4408 PN40 - 38.8 Bar at RT
 - 1.0619 PN40 - 39.0 Bar at RT
 - 1.4408 PN16 - 15.5 Bar at RT
 - 1.0619 PN16 - 15.6 Bar at RT
- Steam Pressure 150 PSIG. Saturated Steam for RTFE.
- Temperature Range -4 to 356 °F (-20 to 180 °C) for RTFE.

STANDARDS

- Design ISO12516-1/2 / API 608
- Mounting Flange ISO 5211
- Face to Face
 - DIN 3202 F4 for DN15 ~ DN100
 - DIN 3202 F5 for DN125 ~ DN150
- Flange Dimension
 - PN40 EN1092-1 for DN15 ~ DN50
 - PN16 EN1092-1 for DN65 ~ DN150
- Material EN1503-1
- Pressure Testing EN 12266

CERTIFICATE

- Fire Safe **OPTION** API 607 6th Edition / ISO 10497
- Fugitive Emission ISO 15848-1 / TA-LUFT
- Quality Assurance ISO 9001
- Material Certificate EN 10204-3.1 MTR
- CE Approval PED 97/23/EC Module H

MATERIAL LIST

NO.	PART NAME	MATERIAL (more options available)
1	BODY	EN1503-1 1.4408 EN1503-1 1.0619
4	BALL	ASTM A351 Gr.CF8M
5	STEM	ASTM A276 Gr.SS316
9	END CAP	EN1503-1 1.4408 EN1503-1 1.0619
11	BODY SEAL	PTFE.
12	SEAT	RTFE.(15%G.F.)
13	THRUST WASHER	RTFE.(15%G.F.)
14	STEM PACKING	RTFE.(15%G.F.)
15	GLAND	SS304
19	HANDLE	FCD45
20	HANDLE BOLT	SS304
22	STEM NUT	SS304
23	HANDLE WASHER	SS304
28	STOP PLATE	SS304
29	BELLEVILLE WASHER	SS301
30	TAB WASHER	SS304
31	STEM O-RING	VITON®
32	PACKING FOLLOWER	PTFE.+25%G.F.
33	STOP PIN	SS304
35	STUD	ASTM A193 Gr.B8
37	BOLT NUT	ASTM A194 Gr.8

DIMENSION

SIZE		PORT	L	E	H1	H3	C	ØG	ØJ	ØI	T	F	MxØN	ØK	Z
DN125	5"	125	325	750	30.0	194	27	250	210	188	22	2.0	8x18	125-F12	14
DN150	6"	150	350	750	30.0	213	27	285	240	212	22	2.0	8x22	125-F12	14

DIMENSION

SIZE		PORT	L	E	H1	H3	C	ØG	ØJ	ØI	T	F	MxØN	ØK	Z
DN125	5"	4.92	12.79	29.52	1.18	7.63	1.06	9.84	8.26	7.40	0.86	0.07	8x0.70	4.92-F12	0.55
DN150	6"	5.90	13.77	29.52	1.18	8.38	1.06	11.22	9.44	8.34	0.86	0.07	8x0.86	4.92-F12	0.55