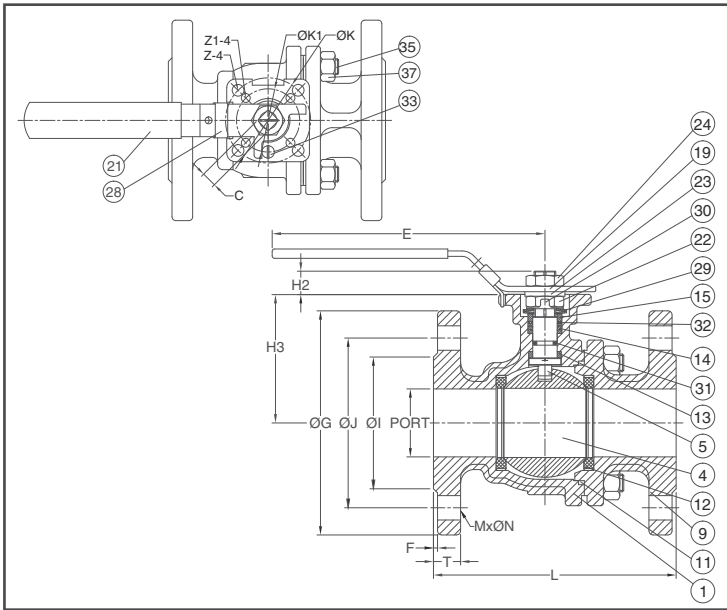
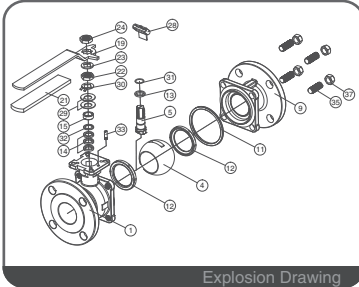
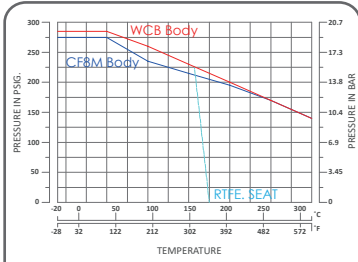




CRN
CERTIFICATED



FEATURES

- Investment Cast Body Construction
- 2 Pieces Body Design
- ISO 5211 Direct Mounting Flange
- Blow-Out-Proof Stem Design
- Anti-Static Device
- Available for Pneumatic or Electric Actuator
- NACE MR0175 is available upon request
- Super Alloy materials for highly corrosive medium are available upon request

AUTOMATION AVAILABLE

SPECIFICATIONS

- Size Range: 1/2" ~ 6" (DN15 ~ DN150)
- End Connection: Flanged End, RF
- Working Pressure: CF8M - 275 PSI (CWP)
WCB - 285 PSI (CWP)
- Steam Pressure: 150 PSIG. Saturated Steam for RTFE.
- Temperature Range: -4 to 356 °F (-20 to 180 °C) for RTFE.

STANDARDS

- Design: ASME/ANSI B16.34 / API 608
- Mounting Flange: ISO 5211
- Face to Face: ASME/ANSI B16.10 Class 150
- Flange Dimension: ASME/ANSI B16.5 Class 150 RF
- Material: ASTM
- Pressure Testing: API 598

CERTIFICATE

- Fire Safe **OPTION**: API 607 6th Edition / ISO 10497
- Fugitive Emission: ISO 15848-1 / TA-LUFT
- Quality Assurance: ISO 9001
- Material Certificate: EN 10204-3.1 MTR
- CE Approval: PED 2014/68/EU Module H
- Canadian Certificate: CRN

MATERIAL LIST

NO.	PART NAME	MATERIAL (more options available)
1	BODY	ASTM A351 Gr.CF8M ASTM A216 Gr.WCB
4	BALL	ASTM A351 Gr.CF8M
5	STEM	ASTM A276 Gr.SS316
9	END CAP	ASTM A351 Gr.CF8M ASTM A216 Gr.WCB
11	BODY SEAL	PTFE.
12	SEAT	RTFE. (15%G.F.)
13	THRUST WASHER	RTFE. (15%G.F.)
14	STEM PACKING	RTFE. (15%G.F.)
15	GLAND BUSH	SS304
19	HANDLE	SS304
21	HANDLE COVER	PLASTIC
22	STEM NUT	SS304
23	HANDLE WASHER	SS304
24	HANDLE NUT	SS304
28	LOCKING DEVICE	SS304
29	BELLEVILLE WASHER	SUS301
30	TAB WASHER	SS304
31	STEM O-RING	VITON®
32	PACKING FOLLOWER	PTFE. +25%G.F.
33	STOP PIN	SS304
35	STUD	ASTM A193 Gr.B8
37	BOLT NUT	ASTM A194 Gr.8

DIMENSION

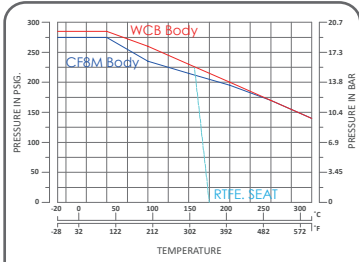
																	unit : mm	
SIZE	PORT	L	E	H2	H3	C	ØG	ØJ	ØI	T	F	M	ØN	ØK	ØK1	Z-4	Z1-4	
DN15	1/2"	15.0	108	112	8.5	48.0	9	89.0	60.5	35.0	11.2	1.6	4	16.0	50/F05	36/F03	7.0	6.0
DN20	3/4"	20.0	117	112	8.5	53.5	9	98.6	70.0	43.0	12.7	1.6	4	16.0	50/F05	36/F03	7.0	6.0
DN25	1"	25.0	127	136	9.5	64.0	9	108.0	79.2	51.0	14.3	1.6	4	16.0	50/F05	36/F03	7.0	6.0
DN32	1-1/4"	32.0	140	185	9.5	71.0	9	117.5	88.9	63.5	15.9	1.6	4	16.0	50/F05	36/F03	7.0	6.0
DN40	1-1/2"	38.0	165	198	14.0	76.0	14	127.0	98.6	73.2	17.5	1.6	4	16.0	70/F07	50/F05	9.0	7.0
DN50	2"	50.0	178	198	13.7	84.5	14	152.5	120.7	92.0	19.1	1.6	4	19.0	70/F07	50/F05	9.0	7.0
DN65	2-1/2"	64.0	190	265	18.0	106.8	17	177.8	139.7	104.7	23.3	1.6	4	19.0	102/F10	70/F07	12.0	10.0
DN80	3"	76.0	203	265	18.0	116.0	17	190.5	152.4	127.0	23.9	1.6	4	19.0	102/F10	70/F07	12.0	10.0
DN100	4"	100.0	229	325	18.0	154.5	17	228.6	190.5	157.2	23.9	1.6	8	19.0	102/F10	70/F07	12.0	10.0

DIMENSION

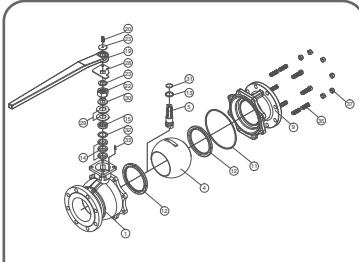
																	unit : inch	
SIZE	PORT	L	E	H2	H3	C	ØG	ØJ	ØI	T	F	M	ØN	ØK	ØK1	Z-4	Z1-4	
DN15	1/2"	0.59	4.25	4.41	0.33	1.89	0.35	3.50	2.38	1.38	0.44	0.06	4	0.63	1.97/F05	1.42/F03	0.28	0.24
DN20	3/4"	0.79	4.61	4.41	0.33	2.11	0.35	3.88	2.76	1.69	0.50	0.06	4	0.63	1.97/F05	1.42/F03	0.28	0.24
DN25	1"	0.98	5.00	5.35	0.37	2.52	0.35	4.25	3.12	2.01	0.56	0.06	4	0.63	1.97/F05	1.42/F03	0.28	0.24
DN32	1-1/4"	1.26	5.51	7.28	0.37	2.80	0.35	4.63	3.50	2.50	0.63	0.06	4	0.63	1.97/F05	1.42/F03	0.28	0.24
DN40	1-1/2"	1.50	6.50	7.80	0.55	2.99	0.55	5.00	3.88	2.88	0.69	0.06	4	0.63	2.76/F07	1.97/F05	0.35	0.28
DN50	2"	1.97	7.01	7.80	0.54	3.33	0.55	6.00	4.75	3.62	0.75	0.06	4	0.75	2.76/F07	1.97/F05	0.35	0.28
DN65	2-1/2"	2.52	7.48	10.43	0.71	4.20	0.67	7.00	5.50	4.12	0.92	0.06	4	0.75	4.02/F10	2.76/F07	0.47	0.39
DN80	3"	2.99	7.99	10.43	0.71	4.57	0.67	7.50	6.00	5.00	0.94	0.06	4	0.75	4.02/F10	2.76/F07	0.47	0.39
DN100	4"	3.94	9.02	12.80	0.71	6.08	0.67	9.00	7.50	6.19	0.94	0.06	8	0.75	4.02/F10	2.76/F07	0.47	0.39



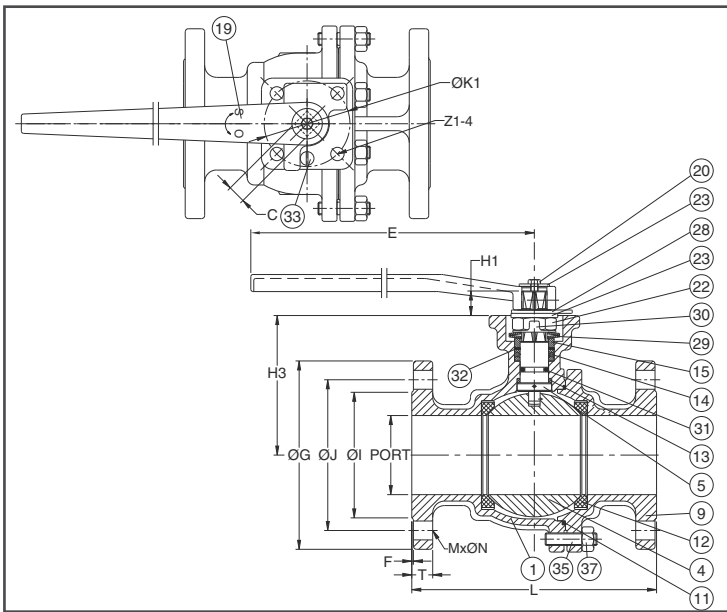
CRN
CERTIFICATED



ANSI Class 150 P-T Chart



Explosion Drawing



FEATURES

- Investment Cast Body Construction
- 2 Pieces Body Design
- ISO 5211 Direct Mounting Flange
- Blow-Out-Proof Stem Design
- Anti-Static Device
- Available for Pneumatic or Electric Actuator
- NACE MR0175 is available upon request
- Super Alloy materials for highly corrosive medium are available upon request

AUTOMATION AVAILABLE

SPECIFICATIONS

- Size Range: 1/2" ~ 6" (DN15 ~ DN150)
- End Connection: Flanged End, RF
- Working Pressure: CF8M - 275 PSI (CWP)
WCB - 285 PSI (CWP)
- Steam Pressure: 150 PSIG. Saturated Steam for RTFE.
- Temperature Range: -4 to 356 °F (-20 to 180 °C) for RTFE.

STANDARDS

- Design: ASME/ANSI B16.34 / API 608
- Mounting Flange: ISO 5211
- Face to Face: ASME/ANSI B16.10 Class 150
- Flange Dimension: ASME/ANSI B16.5 Class 150 RF
- Material: ASTM
- Pressure Testing: API 598

CERTIFICATE

- Fire Safe **OPTION**: API 607 6th Edition / ISO 10497
- Fugitive Emission: ISO 15848-1 / TA-LUFT
- Quality Assurance: ISO 9001
- Material Certificate: EN 10204-3.1 MTR
- CE Approval: PED 2014/68/EU Module H
- Canadian Certificate: CRN

MATERIAL LIST

NO.	PART NAME	MATERIAL (more options available)
1	BODY	ASTM A351 Gr.CF8M ASTM A216 Gr.WCB
4	BALL	ASTM A351 Gr.CF8M
5	STEM	ASTM A276 Gr.SS316
9	END CAP	ASTM A351 Gr.CF8M ASTM A216 Gr.WCB
11	BODY SEAL	PTFE.
12	SEAT	RTFE.(15%G.F.)
13	THRUST WASHER	RTFE.(15%G.F.)
14	STEM PACKING	PTFE.(15%G.F.)
15	GLAND BUSH	SS304
19	HANDLE	FCD45
20	HANDLE BOLT	SS304
22	STEM NUT	SS304
23	HANDLE WASHER	SS304
28	STOP PLATE	SS304
29	BELLEVILLE WASHER	SS301
30	TAB WASHER	SS304
31	STEM O-RING	VITON®
32	PACKING FOLLOWER	PTFE.+25%G.F.
33	STOP PIN	SS304
35	STUD	ASTM A193 Gr.B8
37	BOLT NUT	ASTM A194 Gr.8

DIMENSION

unit : mm

SIZE	PORT	L	E	H1	H3	C	ØG	ØJ	ØI	T	F	M	ØN	ØK	Z
DN125	5"	125.0	356	600	30.0	194.0	27	254.0	216.0	186.0	24.0	1.6	8	22.3	125/F12 14.0
DN150	6"	150.0	394	800	30.0	213.0	27	279.4	241.3	216.0	25.4	1.6	8	22.3	125/F12 14.0

DIMENSION

unit : inch

SIZE	PORT	L	E	H1	H3	C	ØG	ØJ	ØI	T	F	M	ØN	ØK	Z
DN125	5"	4.92	14.02	23.62	1.18	7.64	1.06	10.00	8.50	7.32	0.94	0.06	8	0.88	4.92/F12 0.55
DN150	6"	5.91	15.51	31.50	1.18	8.39	1.06	11.00	9.50	8.50	1.00	0.06	8	0.88	4.92/F12 0.55